



H

e

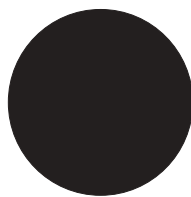
ILLO

SINCERELY.

Catalog 2003/2004

CALVIN

College



Catalog 2003/2004



2003-2004

SEPTEMBER 2003

S	M	T	W	T	F	S

OCTOBER 2003

S	M	T	W	T	F	S

NOVEMBER 2003

S	M	T	W	T	F	S

DECEMBER 2003

S	M	T	W	T	F	S

JANUARY 2004

S	M	T	W	T	F	S

FEBRUARY 2004

S	M	T	W	T	F	S

MARCH 2004

S	M	T	W	T	F	S

APRIL 2004

S	M	T	W	T	F	S

MAY 2004

S	M	T	W	T	F	S

JUNE 2004

S	M	T	W	T	F	S

JULY 2004

S	M	T	W	T	F	S

AUGUST 2004

S	M	T	W	T	F	S

SEPTEMBER 2004

S	M	T	W	T	F	S

OCTOBER 2004

S	M	T	W	T	F	S

NOVEMBER 2004

S	M	T	W	T	F	S

DECEMBER 2004

S	M	T	W	T	F	S

Important Deadlines for Students

Fall Semester

Spring Semester

September 12

February 6

October 15

March 15

November 7

April 9

November 7

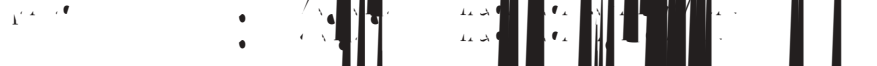
April 9

Academic Calendar

The Fall Semester 2003



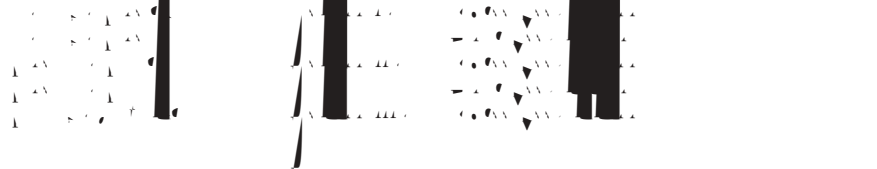
The Interim 2004



The Spring Semester 2004



The Summer Sessions 2004

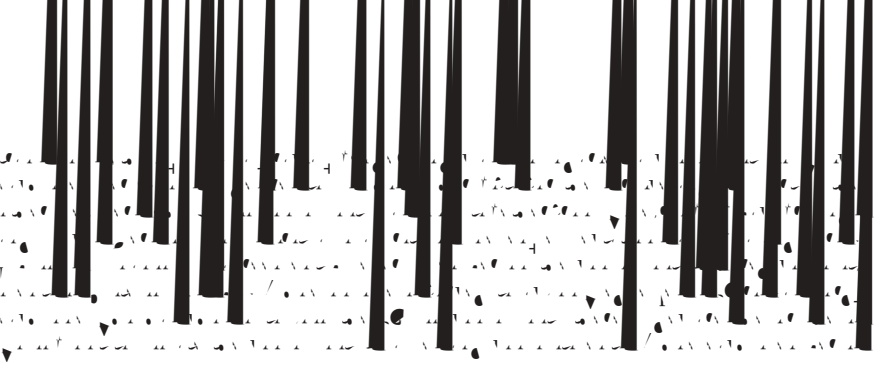




Mission of the College

Vision

.....



Compliance with Legal Requirements

Accreditation and Affiliation

Caltech Summer School

Student Life

wilvinerhrblan canogree wkns to

Our Mission

*As servants of God and partners in education,
We challenge and support students as they
seek meaning in their college experiences.*

*With delight and anticipation, we present them to the world
As a people who are learning to love things that God loves
So that the world is blessed by their presence.*



Health Services

Travel Health and Immunization Services

Immunization Policy

Residence Life

Services for Students

The Fine Arts

Student Conduct

Student Protest and Appeal Procedure

Use of Motor Vehicles

Orientation and Advising

Network Library

Information Technology

The Calvin Alumni Association

Spark

The Calvin Institute of Christian Worship

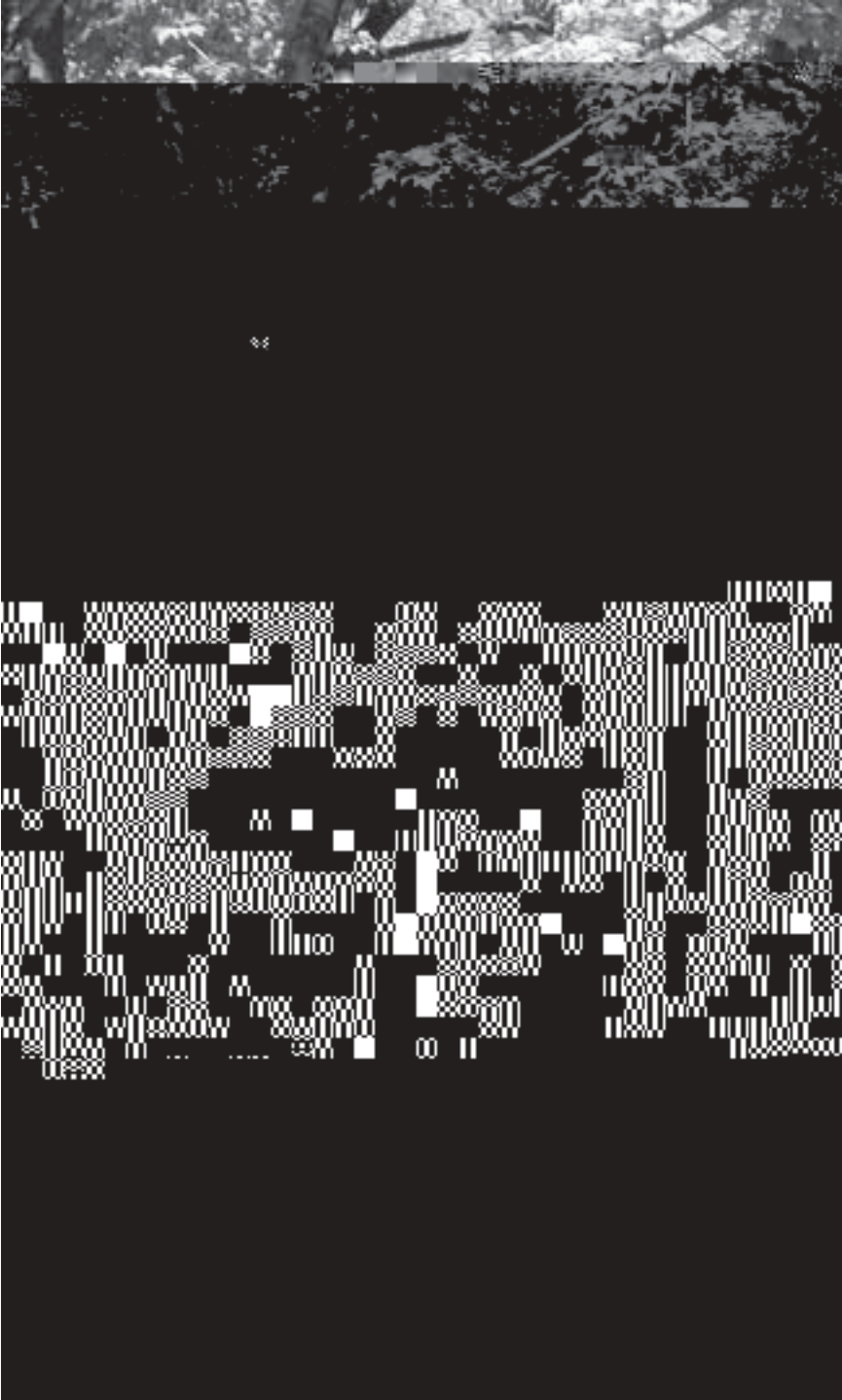
The January Series

The January Series of Calvin College

Series

Series

Series

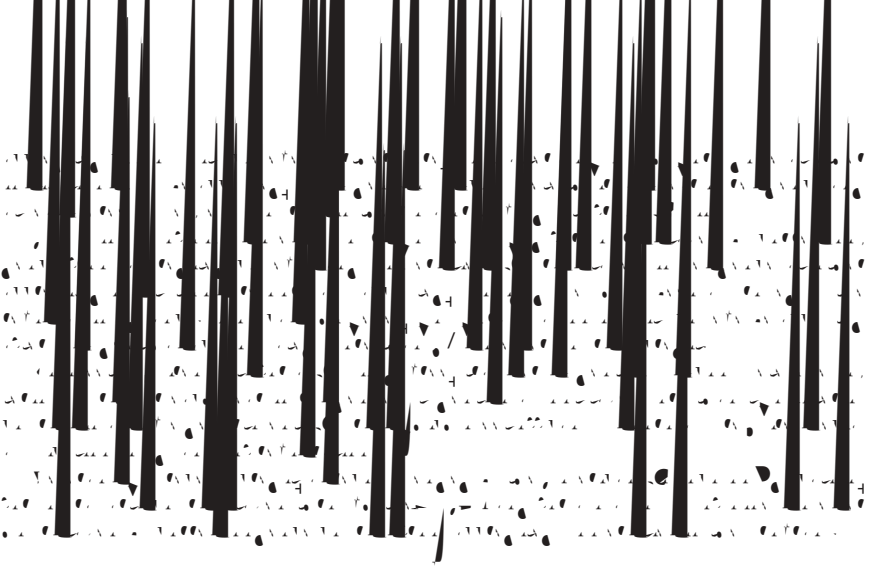


two

one

Admission Under Special Circumstances

Admission of Transfer Students



Admission of International Students

Academic Forgiveness Policy

Policy for Course Credits and Exemption Examination

Advanced Placement —

Visitors and Auditors

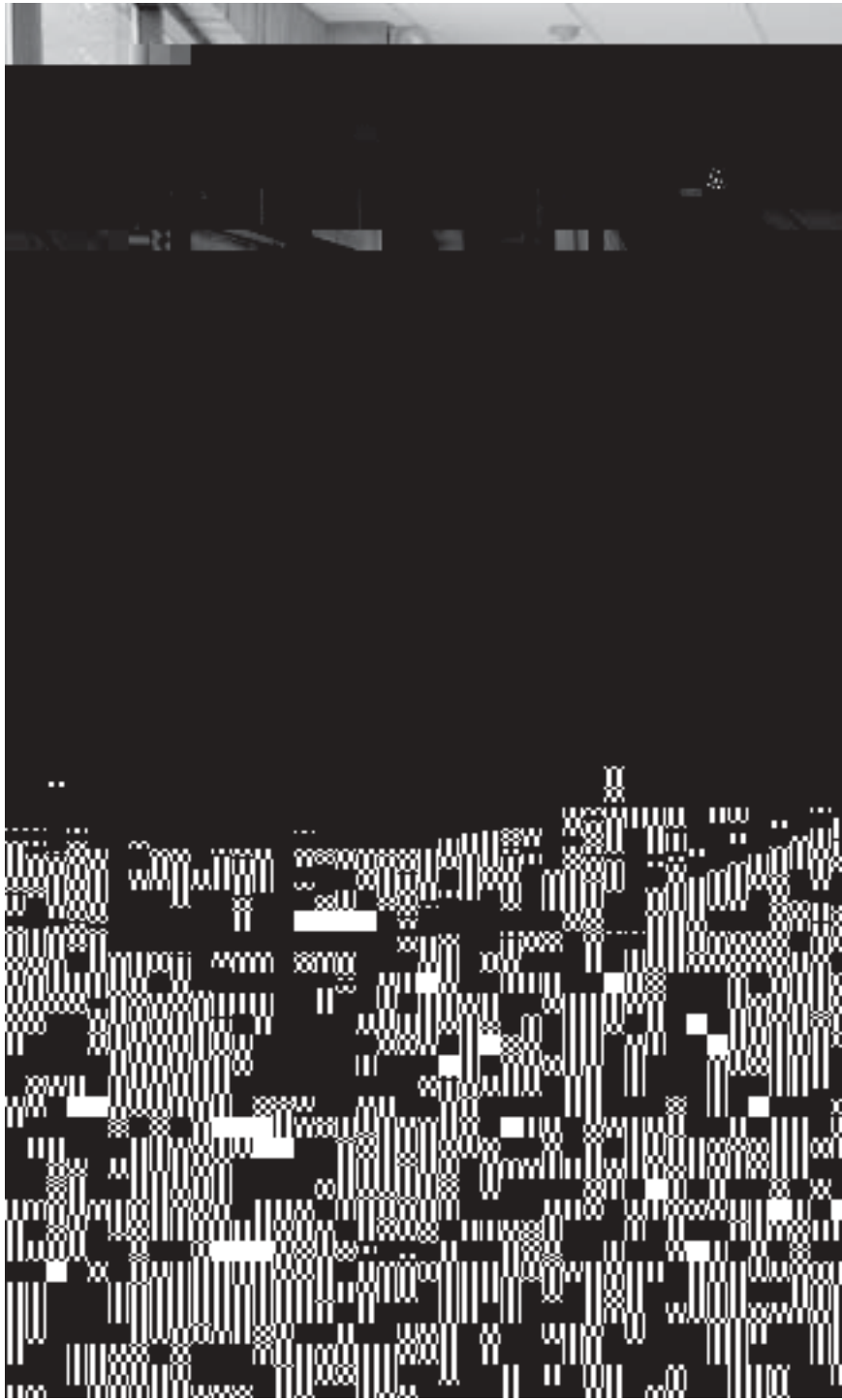
Enrollment in Seminar Classes

Dual Enrollment Policy

Grading System









Core Curriculum and
Special Academic Programs

Core Curriculum

The Core Curriculum: An Engagement with God's Word

Core Curriculum and
Special Academic Programs



are in academic programs that have reduced core curriculum requirements (Accounting, Engineering, Fine Arts, Nursing and Recreation).

- _____
- _____
- _____
- _____

(Must complete if taken REL 131)

(Must complete if taken REL 121)

- _____

- _____

- _____

- _____

- _____

Interim

rim

is supported by wh

Minors

Overlap between major and minor (or supplementary concentration)

*Courses required
in the major*

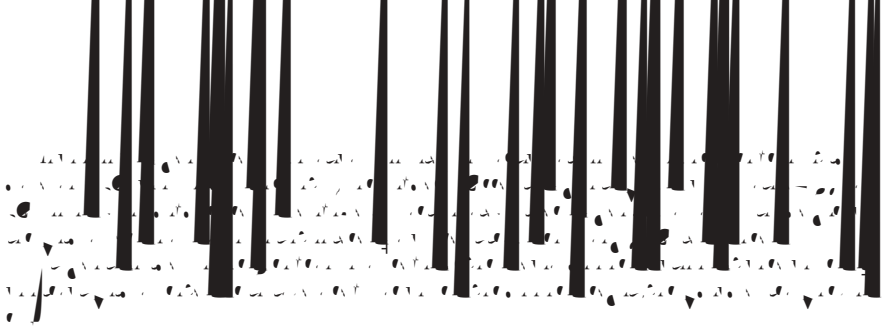
*Maximum
overlap permitted*

*Minimum # of
distinct courses required*

Overlap between two majors.

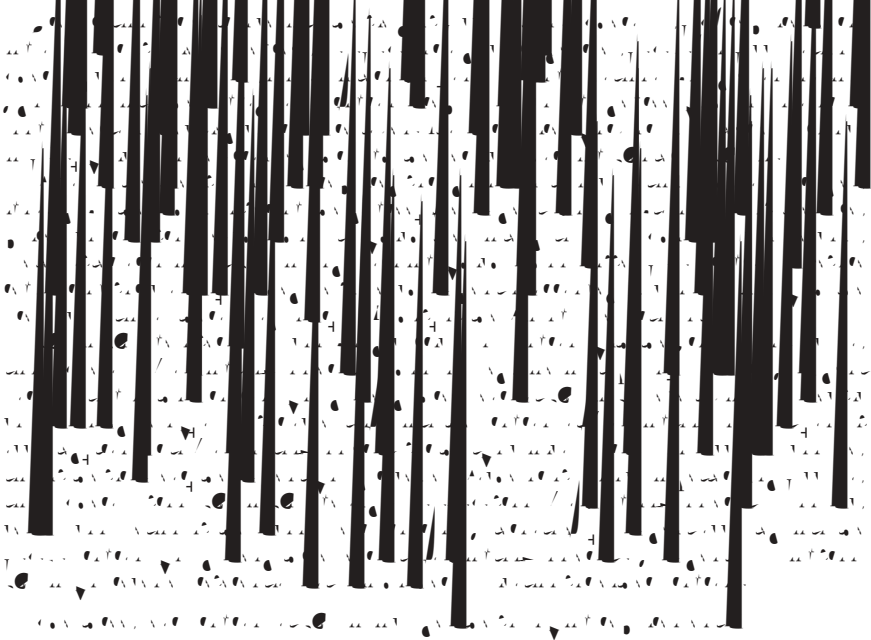
The Adult and Continuing Education Program





Professional Combined Curriculum Programs

Occupational Therapy



Core Curriculum and
Special Academic Programs

.....

Optometry

Semester hours

Pharmacy

Semester hours





Academic Departments
and Courses

Marketing, Staff.

Pre-college Mathematics for the Business and Sciences

H. Buursma, H. Heerspink, A. Groenewold

Pre-college Grammar and Composition

Staff

College Thinking and Learning

B. Morrison.

Accounting

Archaeology

Group Minor in Archaeology

12.001 Introduction to Archaeology
12.002 Field Methods in Archaeology
12.003 Ancient Civilizations
12.004 Ancient Egypt
12.005 Ancient Greece
12.006 Ancient Rome
12.007 Archaeology of the Americas
12.008 Archaeology of the Middle East
12.009 Archaeology of the Pacific
12.010 Archaeology of the World
12.011 Archaeology of the United States
12.012 Archaeology of the World
12.013 Archaeology of the World
12.014 Archaeology of the World
12.015 Archaeology of the World

Art

Professors A. Geidanus, Prabir C.J. Huisman (chair), T. Lunikhuzen, F. Sneyders, Z. Young
Assistant Professors K. Dake, M. Steensma Hoag, J. Van Reeuwijk, A. Wolpa
Instructor J. Van Arragon

Visual Arts (B.A.)

exception.

Program of Concentration:

63 hours

Recommended Cognate:

STUDIO ART MAJOR

STUDIO ART MINOR

ART HISTORY MAJOR

**ELEMENTARY EDUCATION IN ARTS
GROUP MAJOR AND MINOR**

Cognates

ART HISTORY MINOR

**ART EDUCATION GROUP MAJOR
(K-12)**

**ART EDUCATION MINOR
IN ART STUDIES (1-12)**

must

Teacher Education Program Guidebook



/ *Art 101*
 Introduction to Ceramics
 / *Art 102*
 Introduction to Sculpture
 / *Art 103*
 Introduction to Photography
 / *Art 104*
 Introduction to Drawing
 / *Art 105*
 Introduction to Painting
 / *Art 106*
 Introduction to Printmaking
 / *Art 107*
 Introduction to Jewelry
 / *Art 108*
 Introduction to Glass
 / *Art 109*
 Introduction to Textiles
 / *Art 110*
 Introduction to Digital Media
 / *Art 111*
 Introduction to Animation
 / *Art 112*
 Introduction to Game Design
 / *Art 113*
 Introduction to Interactive Design
 / *Art 114*
 Introduction to User Experience Design
 / *Art 115*
 Introduction to Information Design
 / *Art 116*
 Introduction to Visual Communication Design
 / *Art 117*
 Introduction to Branding
 / *Art 118*
 Introduction to Advertising Design
 / *Art 119*
 Introduction to Packaging Design
 / *Art 120*
 Introduction to Environmental Design
 / *Art 121*
 Introduction to Exhibition Design
 / *Art 122*
 Introduction to Museum Design
 / *Art 123*
 Introduction to Cultural Heritage Design
 / *Art 124*
 Introduction to Digital Storytelling
 / *Art 125*
 Introduction to Virtual Reality Design
 / *Art 126*
 Introduction to Augmented Reality Design
 / *Art 127*
 Introduction to Mixed Reality Design
 / *Art 128*
 Introduction to Data Visualization Design
 / *Art 129*
 Introduction to Information Architecture Design
 / *Art 130*
 Introduction to Service Design
 / *Art 131*
 Introduction to Design Thinking
 / *Art 132*
 Introduction to Design Strategy
 / *Art 133*
 Introduction to Design Innovation
 / *Art 134*
 Introduction to Design Leadership
 / *Art 135*
 Introduction to Design Ethics
 / *Art 136*
 Introduction to Design Law
 / *Art 137*
 Introduction to Design Policy
 / *Art 138*
 Introduction to Design History
 / *Art 139*
 Introduction to Design Theory
 / *Art 140*
 Introduction to Design Criticism
 / *Art 141*
 Introduction to Design Research
 / *Art 142*
 Introduction to Design Practice
 / *Art 143*
 Introduction to Design Education
 / *Art 144*
 Introduction to Design Entrepreneurship
 / *Art 145*
 Introduction to Design Social Enterprise
 / *Art 146*
 Introduction to Design Impact
 / *Art 147*
 Introduction to Design Sustainability
 / *Art 148*
 Introduction to Design Resilience
 / *Art 149*
 Introduction to Design Adaptability
 / *Art 150*
 Introduction to Design Flexibility
 / *Art 151*
 Introduction to Design Innovation
 / *Art 152*
 Introduction to Design Creativity
 / *Art 153*
 Introduction to Design Problem Solving
 / *Art 154*
 Introduction to Design Decision Making
 / *Art 155*
 Introduction to Design Collaboration
 / *Art 156*
 Introduction to Design Teamwork
 / *Art 157*
 Introduction to Design Leadership
 / *Art 158*
 Introduction to Design Management
 / *Art 159*
 Introduction to Design Organization
 / *Art 160*
 Introduction to Design Culture
 / *Art 161*
 Introduction to Design Values
 / *Art 162*
 Introduction to Design Principles
 / *Art 163*
 Introduction to Design Practices
 / *Art 164*
 Introduction to Design Processes
 / *Art 165*
 Introduction to Design Methods
 / *Art 166*
 Introduction to Design Tools
 / *Art 167*
 Introduction to Design Techniques
 / *Art 168*
 Introduction to Design Skills
 / *Art 169*
 Introduction to Design Knowledge
 / *Art 170*
 Introduction to Design Wisdom
 / *Art 171*
 Introduction to Design Experience
 / *Art 172*
 Introduction to Design Understanding
 / *Art 173*
 Introduction to Design Appreciation
 / *Art 174*
 Introduction to Design Enjoyment
 / *Art 175*
 Introduction to Design Inspiration
 / *Art 176*
 Introduction to Design Motivation
 / *Art 177*
 Introduction to Design Passion
 / *Art 178*
 Introduction to Design Commitment
 / *Art 179*
 Introduction to Design Dedication
 / *Art 180*
 Introduction to Design Devotion
 / *Art 181*
 Introduction to Design Zeal
 / *Art 182*
 Introduction to Design Enthusiasm
 / *Art 183*
 Introduction to Design Excitement
 / *Art 184*
 Introduction to Design Joy
 / *Art 185*
 Introduction to Design Happiness
 / *Art 186*
 Introduction to Design Well-being
 / *Art 187*
 Introduction to Design Health
 / *Art 188*
 Introduction to Design Prosperity
 / *Art 189*
 Introduction to Design Success
 / *Art 190*
 Introduction to Design Achievement
 / *Art 191*
 Introduction to Design Fulfillment
 / *Art 192*
 Introduction to Design Satisfaction
 / *Art 193*
 Introduction to Design Contentment
 / *Art 194*
 Introduction to Design Peace
 / *Art 195*
 Introduction to Design Harmony
 / *Art 196*
 Introduction to Design Balance
 / *Art 197*
 Introduction to Design Order
 / *Art 198*
 Introduction to Design Structure
 / *Art 199*
 Introduction to Design Organization
 / *Art 200*
 Introduction to Design System

/ *Art 201*
 Intermediate Ceramics
 / *Art 202*
 Intermediate Sculpture
 / *Art 203*
 Intermediate Photography
 / *Art 204*
 Intermediate Drawing
 / *Art 205*
 Intermediate Painting
 / *Art 206*
 Intermediate Printmaking
 / *Art 207*
 Intermediate Jewelry
 / *Art 208*
 Intermediate Glass
 / *Art 209*
 Intermediate Textiles
 / *Art 210*
 Intermediate Digital Media
 / *Art 211*
 Intermediate Animation
 / *Art 212*
 Intermediate Game Design
 / *Art 213*
 Intermediate Interactive Design
 / *Art 214*
 Intermediate User Experience Design
 / *Art 215*
 Intermediate Information Design
 / *Art 216*
 Intermediate Visual Communication Design
 / *Art 217*
 Intermediate Branding
 / *Art 218*
 Intermediate Advertising Design
 / *Art 219*
 Intermediate Packaging Design
 / *Art 220*
 Intermediate Environmental Design
 / *Art 221*
 Intermediate Exhibition Design
 / *Art 222*
 Intermediate Museum Design
 / *Art 223*
 Intermediate Cultural Heritage Design
 / *Art 224*
 Intermediate Digital Storytelling
 / *Art 225*
 Intermediate Virtual Reality Design
 / *Art 226*
 Intermediate Augmented Reality Design
 / *Art 227*
 Intermediate Mixed Reality Design
 / *Art 228*
 Intermediate Data Visualization Design
 / *Art 229*
 Intermediate Information Architecture Design
 / *Art 230*
 Intermediate Service Design
 / *Art 231*
 Intermediate Design Thinking
 / *Art 232*
 Intermediate Design Strategy
 / *Art 233*
 Intermediate Design Innovation
 / *Art 234*
 Intermediate Design Leadership
 / *Art 235*
 Intermediate Design Ethics
 / *Art 236*
 Intermediate Design Law
 / *Art 237*
 Intermediate Design Policy
 / *Art 238*
 Intermediate Design History
 / *Art 239*
 Intermediate Design Theory
 / *Art 240*
 Intermediate Design Criticism
 / *Art 241*
 Intermediate Design Research
 / *Art 242*
 Intermediate Design Practice
 / *Art 243*
 Intermediate Design Education
 / *Art 244*
 Intermediate Design Entrepreneurship
 / *Art 245*
 Intermediate Design Social Enterprise
 / *Art 246*
 Intermediate Design Impact
 / *Art 247*
 Intermediate Design Sustainability
 / *Art 248*
 Intermediate Design Resilience
 / *Art 249*
 Intermediate Design Adaptability
 / *Art 250*
 Intermediate Design Flexibility

Academic Departments
 and Courses



Speers

Internship in Visual Studies



Academic Departments
and Courses



Astronomy

Professors *John Molnar*, *S. Steenwyk* (chair)
Assistant Professor *J. Haasma*

ASTRONOMY MINOR
At least 11 hours, including:

COURSES
☐ / Planets, Stars, and Galaxies

☐ Stars, Galaxies, and the Universe

☐ Planets and Stellar Astronomy

Galactic Astronomy and Cosmology

/ Independent Study

Astronomy Research Writing and Presentation

Modern Observational Astronomy

Biochemistry

Biology

Professors J. Beekse, C. Blomsterboer, H. Bouma, D. DeHaes, R. Nyhof, P. Tigchelaar, J. Ubels,
P. van Praag (chair), J. Wolstra
Associate Professors J. Bonting, A. Hoogwerf, E. Howell, D. Koop, D. Vernooy
Assistant Professor S. Mathijssen



Academic Departments
and Courses

BIOLOGY MAJOR

Students in the Biology Major must complete the following courses:

- BIO 101: General Biology I
- BIO 102: General Biology II
- BIO 201: Cell Biology
- BIO 202: Molecular Biology
- BIO 203: Ecology and Evolution
- BIO 204: Systematics
- BIO 205: Plant Biology
- BIO 206: Animal Biology
- BIO 207: Microbiology
- BIO 208: Biotechnology

Cognates

Students in the Biology Major must complete the following cognate courses:

- PHYS 101: General Physics I
- PHYS 102: General Physics II
- CHEM 101: General Chemistry I
- CHEM 102: General Chemistry II
- MATH 101: Calculus I
- MATH 102: Calculus II
- MATH 103: Calculus III
- MATH 104: Linear Algebra
- MATH 105: Probability and Statistics

BIOLOGY MINOR

Students in the Biology Minor must complete the following courses:

- BIO 101: General Biology I
- BIO 102: General Biology II
- BIO 201: Cell Biology
- BIO 202: Molecular Biology
- BIO 203: Ecology and Evolution

BIOTECHNOLOGY MAJOR

Students in the Biotechnology Major must complete the following courses:

- BIO 101: General Biology I
- BIO 102: General Biology II
- BIO 201: Cell Biology
- BIO 202: Molecular Biology
- BIO 203: Ecology and Evolution
- BIO 204: Systematics
- BIO 205: Plant Biology
- BIO 206: Animal Biology
- BIO 207: Microbiology
- BIO 208: Biotechnology
- CHEM 101: General Chemistry I
- CHEM 102: General Chemistry II
- MATH 101: Calculus I
- MATH 102: Calculus II
- MATH 103: Calculus III
- MATH 104: Linear Algebra
- MATH 105: Probability and Statistics

Prerequisite to a program of concentration in biology is a minimum average of "C" (2.0) in Biology 141, 242, and 243 or approved equivalent courses. The core requirement in biology is met normally by Biology 111, 112, or 115. In some cases Biology 141 may be appropriate.

COURSES

General College Courses

Biological Sciences
 Staff.

Life Sciences for Elementary School Teachers

Staff.

Human Biology
 Staff.

/ History of Science / Leahy Water

Pre-Professional Courses

Human Anatomy /
 Human Physiology /
 Medical Microbiology /

Staff.
 A. Frogewerf

Program of Concentration Courses

Basic Courses
 Cell Biology and Genetics /
 Staff.

Animal Biology

Academic Departments and Courses



C. Blankenship, U. Zylstra

Bio 101

D. Warners.



22 0 TD0.00871Tw[D. WKoetje.Tj/F941 Tf190 0 9 48.314T270Tm-0.0030 T

courses t iAuSable Instituteof bEvirSudyis

Business



COURSES

•/• The Molecular World

A. Leegwater

Organic Chemistry I

Academic Departments
and Courses

Blank spot
Perspectives in Chemistry

Leegwater.

Off-Campus Offering
Environmental Chemistry.

Leegwater.

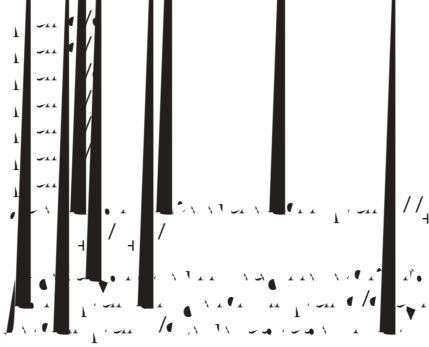
/ History of Physical Science

Graduate Courses

/ Independent Study, Staff.



**LATIN SECONDARY EDUCATION
MINOR**



Latin Lyric
 / Latin Historical Literature
 / Special Topics in Latin

Latin Lyric
 / Latin Historical Literature
 / Special Topics in Latin

Communication Arts and Sciences

Professors: **R. Birtwick (chair), M. Backler, P. Forthner, J. Freiberg, J. Korf, *C. Plantinga,
 **W. Romanowski, D. Schultze, H. Steinhilber
 Associate Professors: M. Hagel, S. Janberg, J. VandenWoude, L. Wecker
 Assistant Professors: D. Carls, P. Goetz, K. Olenchak, E. Pauley
 Adjunct Associate Professor: R. Bursch
 Instructor: C. Smith

Academic Departments
 and Courses

FILM STUDIES

101 / Introduction to Film Studies
 102 / Film Theory and Criticism
 103 / Film History
 104 / Film and Society
 105 / Film and Culture

MASS MEDIA

101 / Introduction to Mass Media
 102 / Mass Media and Society
 103 / Mass Media and Culture
 104 / Mass Media and Politics
 105 / Mass Media and the Environment

RHETORIC AND COMMUNICATION

101 / Introduction to Rhetoric and Communication
 102 / Rhetoric and Communication Theory
 103 / Rhetoric and Communication Practice
 104 / Rhetoric and Communication in the Workplace
 105 / Rhetoric and Communication in the Digital Age

**SPEECH PATHOLOGY AND
AUDIOLOGY**

THEATRE

**SPEECH PATHOLOGY AND
AUDIOLOGY**

Academic Departments
and Courses

**DIGITAL COMMUNICATION
GROUP MAJOR**

1. COMM 101 Introduction to Communication Studies
2. COMM 102 Introduction to Mass Media
3. COMM 103 Introduction to Public Speaking
4. COMM 104 Introduction to Journalism
5. COMM 105 Introduction to Advertising
6. COMM 106 Introduction to Public Relations
7. COMM 107 Introduction to Media Law and Ethics
8. COMM 108 Introduction to Media History
9. COMM 109 Introduction to Media Research
10. COMM 110 Introduction to Media Criticism

CAS MINOR

1. COMM 101 Introduction to Communication Studies
2. COMM 102 Introduction to Mass Media
3. COMM 103 Introduction to Public Speaking
4. COMM 104 Introduction to Journalism
5. COMM 105 Introduction to Advertising
6. COMM 106 Introduction to Public Relations
7. COMM 107 Introduction to Media Law and Ethics
8. COMM 108 Introduction to Media History
9. COMM 109 Introduction to Media Research
10. COMM 110 Introduction to Media Criticism

MEDIA STUDIES MINOR

1. COMM 101 Introduction to Communication Studies
2. COMM 102 Introduction to Mass Media
3. COMM 103 Introduction to Public Speaking
4. COMM 104 Introduction to Journalism
5. COMM 105 Introduction to Advertising
6. COMM 106 Introduction to Public Relations
7. COMM 107 Introduction to Media Law and Ethics
8. COMM 108 Introduction to Media History
9. COMM 109 Introduction to Media Research
10. COMM 110 Introduction to Media Criticism

**ELEMENTARY EDUCATION
CAS MINOR**

1. COMM 101 Introduction to Communication Studies
2. COMM 102 Introduction to Mass Media
3. COMM 103 Introduction to Public Speaking
4. COMM 104 Introduction to Journalism
5. COMM 105 Introduction to Advertising
6. COMM 106 Introduction to Public Relations
7. COMM 107 Introduction to Media Law and Ethics
8. COMM 108 Introduction to Media History
9. COMM 109 Introduction to Media Research
10. COMM 110 Introduction to Media Criticism

**SECONDARY EDUCATION
CAS MINOR**

1. COMM 101 Introduction to Communication Studies
2. COMM 102 Introduction to Mass Media
3. COMM 103 Introduction to Public Speaking
4. COMM 104 Introduction to Journalism
5. COMM 105 Introduction to Advertising
6. COMM 106 Introduction to Public Relations
7. COMM 107 Introduction to Media Law and Ethics
8. COMM 108 Introduction to Media History
9. COMM 109 Introduction to Media Research
10. COMM 110 Introduction to Media Criticism

**ELEMENTARY EDUCATION
CAS MINOR**

1. COMM 101 Introduction to Communication Studies
2. COMM 102 Introduction to Mass Media
3. COMM 103 Introduction to Public Speaking
4. COMM 104 Introduction to Journalism
5. COMM 105 Introduction to Advertising
6. COMM 106 Introduction to Public Relations
7. COMM 107 Introduction to Media Law and Ethics
8. COMM 108 Introduction to Media History
9. COMM 109 Introduction to Media Research
10. COMM 110 Introduction to Media Criticism

COURSES

1. COMM 101 Introduction to Communication Studies
2. COMM 102 Introduction to Mass Media
3. COMM 103 Introduction to Public Speaking
4. COMM 104 Introduction to Journalism
5. COMM 105 Introduction to Advertising
6. COMM 106 Introduction to Public Relations
7. COMM 107 Introduction to Media Law and Ethics
8. COMM 108 Introduction to Media History
9. COMM 109 Introduction to Media Research
10. COMM 110 Introduction to Media Criticism

C. Smit.

Theory and Communication

. Korf

Production and Center

Group Communication

R. Anker

Intercultural Communication

A. Van

Eero

Writing for the Media

T. Van den Berg

Television Criticism

Staff

Radio Design and Aesthetic

R. Fortner

Television Studio Production

Q. Schultze

Academic Departments
and Courses

Journal of Mass Communication

J. J. Gerstlitz, P. Goetz

Journal of Interpersonal Communication

J. J. Gerstlitz, P. Goetz

Journal of Nonverbal Communication

J. J. Gerstlitz, P. Goetz

Journal of Personality and Social Psychology

J. J. Gerstlitz, P. Goetz

Journal of Personality and Individual Differences

J. J. Gerstlitz, P. Goetz

Journal of Personality and Social Psychology

J. J. Gerstlitz, P. Goetz

Journal of Personality and Social Psychology

J. J. Gerstlitz, P. Goetz

Journal of Personality and Social Psychology

J. J. Gerstlitz, P. Goetz

Journal of Personality and Social Psychology

J. J. Gerstlitz, P. Goetz

Journal of Personality and Social Psychology

J. J. Gerstlitz, P. Goetz

Journal of Personality and Social Psychology

J. J. Gerstlitz, P. Goetz

Journal of Personality and Social Psychology

J. J. Gerstlitz, P. Goetz

Journal of Personality and Social Psychology

J. J. Gerstlitz, P. Goetz

Journal of Personality and Social Psychology

J. J. Gerstlitz, P. Goetz

Journal of Personality and Social Psychology

J. J. Gerstlitz, P. Goetz

Journal of Personality and Social Psychology

J. J. Gerstlitz, P. Goetz

Journal of Personality and Social Psychology

J. J. Gerstlitz, P. Goetz

Journal of Personality and Social Psychology

J. J. Gerstlitz, P. Goetz

Journal of Mass Communication
Sphere

J. J. Gerstlitz, P. Goetz

Journal of Mass Communication

J. J. Gerstlitz, P. Goetz

Journal of Mass Communication

J. J. Gerstlitz, P. Goetz

Journal of Mass Communication

J. J. Gerstlitz, P. Goetz

Journal of Mass Communication

J. J. Gerstlitz, P. Goetz

Journal of Mass Communication

J. J. Gerstlitz, P. Goetz

Journal of Mass Communication

J. J. Gerstlitz, P. Goetz

Journal of Mass Communication

J. J. Gerstlitz, P. Goetz

Journal of Mass Communication

J. J. Gerstlitz, P. Goetz

Journal of Mass Communication

J. J. Gerstlitz, P. Goetz

Journal of Mass Communication

J. J. Gerstlitz, P. Goetz

Journal of Mass Communication

J. J. Gerstlitz, P. Goetz

Journal of Mass Communication

J. J. Gerstlitz, P. Goetz

Journal of Mass Communication

J. J. Gerstlitz, P. Goetz

Journal of Mass Communication

J. J. Gerstlitz, P. Goetz

Journal of Mass Communication

J. J. Gerstlitz, P. Goetz

Journal of Mass Communication

J. J. Gerstlitz, P. Goetz

Journal of Mass Communication

J. J. Gerstlitz, P. Goetz

Journal of Mass Communication

J. J. Gerstlitz, P. Goetz

Academic Departments
and Courses

J. Vander Ploeg

Journalism and Mass Media

Journalism and Mass Media

Journalism and Mass Media

Journalism and Mass Media

Journalism and Mass Media

Journalism and Mass Media

Journalism and Mass Media

Journalism and Mass Media

Journalism and Mass Media

Journalism and Mass Media

Journalism and Mass Media

Journalism and Mass Media

Journalism and Mass Media

Journalism and Mass Media

Journalism and Mass Media

Journalism and Mass Media

Journalism and Mass Media

Journalism and Mass Media

Journalism and Mass Media

Journalism and Mass Media

Journalism and Mass Media

Journalism and Mass Media

Journalism and Mass Media

Journalism and Mass Media

Journalism and Mass Media

Journalism and Mass Media

Journalism and Mass Media

Journalism and Mass Media

Journalism and Mass Media

Journalism and Mass Media

Journalism and Mass Media

J. Bates

Independent Study

Independent Study

Special Topics in Communication

Special Topics in Communication

Special Topics in Communication

Special Topics in Communication

Special Topics in Communication

Special Topics in Communication

Special Topics in Communication

Special Topics in Communication

Special Topics in Communication

Special Topics in Communication

Special Topics in Communication

Special Topics in Communication

Special Topics in Communication

Special Topics in Communication

Special Topics in Communication

Special Topics in Communication

Special Topics in Communication

Special Topics in Communication

Special Topics in Communication

Special Topics in Communication

Special Topics in Communication

Special Topics in Communication

Special Topics in Communication

Special Topics in Communication

Special Topics in Communication

Special Topics in Communication

Special Topics in Communication

Special Topics in Communication

Special Topics in Communication

Computer Science

Professors J. Adams, E. Fife, D. Laverell, L. Nyhoff, H. Plantinga, K. Vander Linden (chair)

COURSES

Computer Science

CS 101 / Applied C++

Computer Architecture
Vandor Linden.

Logic, Computability and Complexity

Mathematical Foundations of Computer Science

Programming Languages

Software Engineering

Systems Programming

D. Lavrenko.

Computer Networks

Computer Systems

Database Systems

Operating Systems

Programming

I. Beverell.

Database Management Systems

Operating Systems

Programming

Vandor Linden.

Artificial Intelligence

Computer Architecture

Computer Networks

Database Systems

Computer Graphics

Computer Systems

Database Systems

High Performance Computing

H. Plantinga.

High Performance Computing

Operating Systems

Programming

J. Allaire.

Numerical Analysis

Operating Systems

Programming

D. Frank.

Self-Organizing Computer Science

Software Engineering

Systems Programming

K.



Staff
Object-Oriented Programming in Java

Staff.

Personal Computer Administration, (

BUSINESS MAJOR

Cognates

BUSINESS MINOR

ECONOMICS MAJOR

Cognates

ECONOMICS MINOR

ACCOUNTING MAJOR

Cognates

**BUSINESS MATHEMATICS
GROUP MAJOR**

Cognates

**MATHEMATICS/ECONOMICS
GROUP MAJOR**

BACHELOR OF SCIENCE IN ACCOUNTANCY (B.S.A.)

First year Semester Hours

Course	Hours
ACCT 101	3
ACCT 102	3
ACCT 103	3
ACCT 104	3
ACCT 105	3
ACCT 106	3
ACCT 107	3
ACCT 108	3
ACCT 109	3
ACCT 110	3
ACCT 111	3
ACCT 112	3
ACCT 113	3
ACCT 114	3
ACCT 115	3
ACCT 116	3
ACCT 117	3
ACCT 118	3
ACCT 119	3
ACCT 120	3
ACCT 121	3
ACCT 122	3
ACCT 123	3
ACCT 124	3
ACCT 125	3
ACCT 126	3
ACCT 127	3
ACCT 128	3
ACCT 129	3
ACCT 130	3
ACCT 131	3
ACCT 132	3
ACCT 133	3
ACCT 134	3
ACCT 135	3
ACCT 136	3
ACCT 137	3
ACCT 138	3
ACCT 139	3
ACCT 140	3
ACCT 141	3
ACCT 142	3
ACCT 143	3
ACCT 144	3
ACCT 145	3
ACCT 146	3
ACCT 147	3
ACCT 148	3
ACCT 149	3
ACCT 150	3
ACCT 151	3
ACCT 152	3
ACCT 153	3
ACCT 154	3
ACCT 155	3
ACCT 156	3
ACCT 157	3
ACCT 158	3
ACCT 159	3
ACCT 160	3
ACCT 161	3
ACCT 162	3
ACCT 163	3
ACCT 164	3
ACCT 165	3
ACCT 166	3
ACCT 167	3
ACCT 168	3
ACCT 169	3
ACCT 170	3
ACCT 171	3
ACCT 172	3
ACCT 173	3
ACCT 174	3
ACCT 175	3
ACCT 176	3
ACCT 177	3
ACCT 178	3
ACCT 179	3
ACCT 180	3
ACCT 181	3
ACCT 182	3
ACCT 183	3
ACCT 184	3
ACCT 185	3
ACCT 186	3
ACCT 187	3
ACCT 188	3
ACCT 189	3
ACCT 190	3
ACCT 191	3
ACCT 192	3
ACCT 193	3
ACCT 194	3
ACCT 195	3
ACCT 196	3
ACCT 197	3
ACCT 198	3
ACCT 199	3
ACCT 200	3

Second year

Course	Hours
ACCT 201	3
ACCT 202	3
ACCT 203	3
ACCT 204	3
ACCT 205	3
ACCT 206	3
ACCT 207	3
ACCT 208	3
ACCT 209	3
ACCT 210	3
ACCT 211	3
ACCT 212	3
ACCT 213	3
ACCT 214	3
ACCT 215	3
ACCT 216	3
ACCT 217	3
ACCT 218	3
ACCT 219	3
ACCT 220	3
ACCT 221	3
ACCT 222	3
ACCT 223	3
ACCT 224	3
ACCT 225	3
ACCT 226	3
ACCT 227	3
ACCT 228	3
ACCT 229	3
ACCT 230	3
ACCT 231	3
ACCT 232	3
ACCT 233	3
ACCT 234	3
ACCT 235	3
ACCT 236	3
ACCT 237	3
ACCT 238	3
ACCT 239	3
ACCT 240	3
ACCT 241	3
ACCT 242	3
ACCT 243	3
ACCT 244	3
ACCT 245	3
ACCT 246	3
ACCT 247	3
ACCT 248	3
ACCT 249	3
ACCT 250	3
ACCT 251	3
ACCT 252	3
ACCT 253	3
ACCT 254	3
ACCT 255	3
ACCT 256	3
ACCT 257	3
ACCT 258	3
ACCT 259	3
ACCT 260	3
ACCT 261	3
ACCT 262	3
ACCT 263	3
ACCT 264	3
ACCT 265	3
ACCT 266	3
ACCT 267	3
ACCT 268	3
ACCT 269	3
ACCT 270	3
ACCT 271	3
ACCT 272	3
ACCT 273	3
ACCT 274	3
ACCT 275	3
ACCT 276	3
ACCT 277	3
ACCT 278	3
ACCT 279	3
ACCT 280	3
ACCT 281	3
ACCT 282	3
ACCT 283	3
ACCT 284	3
ACCT 285	3
ACCT 286	3
ACCT 287	3
ACCT 288	3
ACCT 289	3
ACCT 290	3
ACCT 291	3
ACCT 292	3
ACCT 293	3
ACCT 294	3
ACCT 295	3
ACCT 296	3
ACCT 297	3
ACCT 298	3
ACCT 299	3
ACCT 300	3

Third year

Course	Hours
ACCT 301	3
ACCT 302	3
ACCT 303	3
ACCT 304	3
ACCT 305	3
ACCT 306	3
ACCT 307	3
ACCT 308	3
ACCT 309	3
ACCT 310	3
ACCT 311	3
ACCT 312	3
ACCT 313	3
ACCT 314	3
ACCT 315	3
ACCT 316	3
ACCT 317	3
ACCT 318	3
ACCT 319	3
ACCT 320	3
ACCT 321	3
ACCT 322	3
ACCT 323	3
ACCT 324	3
ACCT 325	3
ACCT 326	3
ACCT 327	3
ACCT 328	3
ACCT 329	3
ACCT 330	3
ACCT 331	3
ACCT 332	3
ACCT 333	3
ACCT 334	3
ACCT 335	3
ACCT 336	3
ACCT 337	3
ACCT 338	3
ACCT 339	3
ACCT 340	3
ACCT 341	3
ACCT 342	3
ACCT 343	3
ACCT 344	3
ACCT 345	3
ACCT 346	3
ACCT 347	3
ACCT 348	3
ACCT 349	3
ACCT 350	3
ACCT 351	3
ACCT 352	3
ACCT 353	3
ACCT 354	3
ACCT 355	3
ACCT 356	3
ACCT 357	3
ACCT 358	3
ACCT 359	3
ACCT 360	3
ACCT 361	3
ACCT 362	3
ACCT 363	3
ACCT 364	3
ACCT 365	3
ACCT 366	3
ACCT 367	3
ACCT 368	3
ACCT 369	3
ACCT 370	3
ACCT 371	3
ACCT 372	3
ACCT 373	3
ACCT 374	3
ACCT 375	3
ACCT 376	3
ACCT 377	3
ACCT 378	3
ACCT 379	3
ACCT 380	3
ACCT 381	3
ACCT 382	3
ACCT 383	3
ACCT 384	3
ACCT 385	3
ACCT 386	3
ACCT 387	3
ACCT 388	3
ACCT 389	3
ACCT 390	3
ACCT 391	3
ACCT 392	3
ACCT 393	3
ACCT 394	3
ACCT 395	3
ACCT 396	3
ACCT 397	3
ACCT 398	3
ACCT 399	3
ACCT 400	3

Academic Departments
and Courses

BACHELOR OF SCIENCE IN PUBLIC ACCOUNTANCY (BSPA) PROGRAM

First year *Semester Hours*

Course	Hours
BSA 101	3
BSA 102	3
BSA 103	3
BSA 104	3
BSA 105	3
BSA 106	3
BSA 107	3
BSA 108	3
BSA 109	3
BSA 110	3
BSA 111	3
BSA 112	3
BSA 113	3
BSA 114	3
BSA 115	3
BSA 116	3
BSA 117	3
BSA 118	3
BSA 119	3
BSA 120	3
BSA 121	3
BSA 122	3
BSA 123	3
BSA 124	3
BSA 125	3
BSA 126	3
BSA 127	3
BSA 128	3
BSA 129	3
BSA 130	3
BSA 131	3
BSA 132	3
BSA 133	3
BSA 134	3
BSA 135	3
BSA 136	3
BSA 137	3
BSA 138	3
BSA 139	3
BSA 140	3
BSA 141	3
BSA 142	3
BSA 143	3
BSA 144	3
BSA 145	3
BSA 146	3
BSA 147	3
BSA 148	3
BSA 149	3
BSA 150	3
BSA 151	3
BSA 152	3
BSA 153	3
BSA 154	3
BSA 155	3
BSA 156	3
BSA 157	3
BSA 158	3
BSA 159	3
BSA 160	3
BSA 161	3
BSA 162	3
BSA 163	3
BSA 164	3
BSA 165	3
BSA 166	3
BSA 167	3
BSA 168	3
BSA 169	3
BSA 170	3
BSA 171	3
BSA 172	3
BSA 173	3
BSA 174	3
BSA 175	3
BSA 176	3
BSA 177	3
BSA 178	3
BSA 179	3
BSA 180	3
BSA 181	3
BSA 182	3
BSA 183	3
BSA 184	3
BSA 185	3
BSA 186	3
BSA 187	3
BSA 188	3
BSA 189	3
BSA 190	3
BSA 191	3
BSA 192	3
BSA 193	3
BSA 194	3
BSA 195	3
BSA 196	3
BSA 197	3
BSA 198	3
BSA 199	3
BSA 200	3

Second year

Course	Hours
BSA 201	3
BSA 202	3
BSA 203	3
BSA 204	3
BSA 205	3
BSA 206	3
BSA 207	3
BSA 208	3
BSA 209	3
BSA 210	3
BSA 211	3
BSA 212	3
BSA 213	3
BSA 214	3
BSA 215	3
BSA 216	3
BSA 217	3
BSA 218	3
BSA 219	3
BSA 220	3
BSA 221	3
BSA 222	3
BSA 223	3
BSA 224	3
BSA 225	3
BSA 226	3
BSA 227	3
BSA 228	3
BSA 229	3
BSA 230	3
BSA 231	3
BSA 232	3
BSA 233	3
BSA 234	3
BSA 235	3
BSA 236	3
BSA 237	3
BSA 238	3
BSA 239	3
BSA 240	3
BSA 241	3
BSA 242	3
BSA 243	3
BSA 244	3
BSA 245	3
BSA 246	3
BSA 247	3
BSA 248	3
BSA 249	3
BSA 250	3
BSA 251	3
BSA 252	3
BSA 253	3
BSA 254	3
BSA 255	3
BSA 256	3
BSA 257	3
BSA 258	3
BSA 259	3
BSA 260	3
BSA 261	3
BSA 262	3
BSA 263	3
BSA 264	3
BSA 265	3
BSA 266	3
BSA 267	3
BSA 268	3
BSA 269	3
BSA 270	3
BSA 271	3
BSA 272	3
BSA 273	3
BSA 274	3
BSA 275	3
BSA 276	3
BSA 277	3
BSA 278	3
BSA 279	3
BSA 280	3
BSA 281	3
BSA 282	3
BSA 283	3
BSA 284	3
BSA 285	3
BSA 286	3
BSA 287	3
BSA 288	3
BSA 289	3
BSA 290	3
BSA 291	3
BSA 292	3
BSA 293	3
BSA 294	3
BSA 295	3
BSA 296	3
BSA 297	3
BSA 298	3
BSA 299	3
BSA 300	3

Third year

Course	Hours
BSA 301	3
BSA 302	3
BSA 303	3
BSA 304	3
BSA 305	3
BSA 306	3
BSA 307	3
BSA 308	3
BSA 309	3
BSA 310	3
BSA 311	3
BSA 312	3
BSA 313	3
BSA 314	3
BSA 315	3
BSA 316	3
BSA 317	3
BSA 318	3
BSA 319	3
BSA 320	3
BSA 321	3
BSA 322	3
BSA 323	3
BSA 324	3
BSA 325	3
BSA 326	3
BSA 327	3
BSA 328	3
BSA 329	3
BSA 330	3
BSA 331	3
BSA 332	3
BSA 333	3
BSA 334	3
BSA 335	3
BSA 336	3
BSA 337	3
BSA 338	3
BSA 339	3
BSA 340	3
BSA 341	3
BSA 342	3
BSA 343	3
BSA 344	3
BSA 345	3
BSA 346	3
BSA 347	3
BSA 348	3
BSA 349	3
BSA 350	3
BSA 351	3
BSA 352	3
BSA 353	3
BSA 354	3
BSA 355	3
BSA 356	3
BSA 357	3
BSA 358	3
BSA 359	3
BSA 360	3
BSA 361	3
BSA 362	3
BSA 363	3
BSA 364	3
BSA 365	3
BSA 366	3
BSA 367	3
BSA 368	3
BSA 369	3
BSA 370	3
BSA 371	3
BSA 372	3
BSA 373	3
BSA 374	3
BSA 375	3
BSA 376	3
BSA 377	3
BSA 378	3
BSA 379	3
BSA 380	3
BSA 381	3
BSA 382	3
BSA 383	3
BSA 384	3
BSA 385	3
BSA 386	3
BSA 387	3
BSA 388	3
BSA 389	3
BSA 390	3
BSA 391	3
BSA 392	3
BSA 393	3
BSA 394	3
BSA 395	3
BSA 396	3
BSA 397	3
BSA 398	3
BSA 399	3
BSA 400	3

Fourth year

Course	Hours
BSA 401	3
BSA 402	3
BSA 403	3
BSA 404	3
BSA 405	3
BSA 406	3
BSA 407	3
BSA 408	3
BSA 409	3
BSA 410	3
BSA 411	3
BSA 412	3
BSA 413	3
BSA 414	3
BSA 415	3
BSA 416	3
BSA 417	3
BSA 418	3
BSA 419	3
BSA 420	3
BSA 421	3
BSA 422	3
BSA 423	3
BSA 424	3
BSA 425	3
BSA 426	3
BSA 427	3
BSA 428	3
BSA 429	3
BSA 430	3
BSA 431	3
BSA 432	3
BSA 433	3
BSA 434	3
BSA 435	3
BSA 436	3
BSA 437	3
BSA 438	3
BSA 439	3
BSA 440	3
BSA 441	3
BSA 442	3
BSA 443	3
BSA 444	3
BSA 445	3
BSA 446	3
BSA 447	3
BSA 448	3
BSA 449	3
BSA 450	3
BSA 451	3
BSA 452	3
BSA 453	3
BSA 454	3
BSA 455	3
BSA 456	3
BSA 457	3
BSA 458	3
BSA 459	3
BSA 460	3
BSA 461	3
BSA 462	3
BSA 463	3
BSA 464	3
BSA 465	3
BSA 466	3
BSA 467	3
BSA 468	3
BSA 469	3
BSA 470	3
BSA 471	3
BSA 472	3
BSA 473	3
BSA 474	3
BSA 475	3
BSA 476	3
BSA 477	3
BSA 478	3
BSA 479	3
BSA 480	3
BSA 481	3
BSA 482	3
BSA 483	3
BSA 484	3
BSA 485	3
BSA 486	3
BSA 487	3
BSA 488	3
BSA 489	3
BSA 490	3
BSA 491	3
BSA 492	3
BSA 493	3
BSA 494	3
BSA 495	3
BSA 496	3
BSA 497	3
BSA 498	3
BSA 499	3
BSA 500	3

Academic Departments
and Courses

/ Income Tax

Health Care Administration and Economics

Production and Operations Management

Academic Departments
and Courses



Intermediate Microeconomics

Intermediate Microeconomics
G.
Monsma.

Intermediate Macroeconomics

Education

Professors J. Gormas, S. Hasseler (Director of Teacher Education), T. Hoeksema (chair),
C. Joldersma, K. Keeley, M. Kraker, A. Post, P. Soerdama, L. Stegink, Y. VanEd

Associate Professor J. Rooks

Assistant Professors D. Buursma, D. Isom

Instructor L. Dekker

Advanced Professors E. Hekman, S. Vryhof

Teacher Education Associate P. Oostenink

Undergraduate Teacher Education Program

Education Program Guidelines for the Bachelor of Science in Teacher Education

1. Introduction
2. Program Objectives
3. Program Structure
4. Admission Requirements
5. Course Requirements
6. Assessment
7. Graduation Requirements
8. Contact Information

J. Gormas, R. Sjoerdmsa.

/ The Learner in the Educational Context: Development and Diversity.

SECONDARY EDUCATION COURSES

SPECIAL EDUCATION MAJOR (COGNITIVE IMPAIRMENT):

Advisor: T. Hoeksema

EARLY CHILDHOOD MINOR

Advisor: J. VanHe

UNDEGREE COURSES

Introduction to Education

The Teacher Education Graduate

Curriculum in Instruction / *Staff*

Philosophy of Education / *Core*

Teaching Social Studies in the Elementary and Middle School

Staff

Identification of Cognitive Impairment

The Teacher

Hoesens

Teaching in Charter and Secondary

Staff

Teaching Religion Studies in the Elementary School

Reevey

Assessment in Cognitive Impairment

... T. Hoeksema
... School Language Development

... Introduction to Methods Teaching
... Reading: Elementary

Academic Departments
and Courses

gram Guidebook

Staff

Directed Teaching: Elementary - English as a Second Language

Loeksema

Directed Teaching: Elementary - English as a Second Language

Staff

Directed Teaching: Elementary - English as a Second Language

Staff

Alternative Seminar: Instructional Components of Education

Jollersna

Social Studies and Education

D. Isam H. Bolter

Graduate Teacher Education Program

Master of Education Degree



GRADUATE COURSES

Advanced Educational Psychology

R. Sterner

Advanced Foundations in Education

J. Collins, D. Isom

Theories of Instruction

B. Herman.

Methods and Issues in Teaching and Literacy Instruction

A. Post.

Practicum Learning Disabilities

D. Buursma, Staff.

Theories of Learning Disabilities

Book

Diagnosis and Remediation of Reading Disabilities

Post

Teaching Literacy: Research and Literature

Academic Departments and Courses



Individuals

International Concentration Designation

Transfer Student Admission

Notes Regarding Admission and Graduation

Academic Departments
and Courses

Introduction to Conservation Laws and
Thermodynamics

Staff.

/ Introduction to Computer Architecture



Computer Architecture and Digital Systems Design

Staff
Structural Analysis

Academic Departments
and Courses

Independent Study

Staff

Seminars/Internships
Engineering Internship

International Engineering Internship

Nielsen

Engineering Seminar //

E. Nielsen.

English

Professors R. Anker, W. D. Brown, S. Felch, D. Hettinga, J. Neeland (chair), K. Sauer,
G. Schmidt, J. H. Timmerman, W. Van de Koppele, D. Van
Associate Professors E. Angellia, J. Van den Bosch, D. Eienstra
Assistant Professors G. Bingers, C. Fonder, J. Holberg, D. Holsem, J. N. Hull,
L. Naranjo-Hues, C. Pollard, D. Ulfan, E. Van der Si
Adjunct Professor W. Vries
Adjunct Assistant Professor M. Vonira

ENGLISH MAJOR

ENGLISH MINOR

Basic Journalism

Studies in literature

/ Creative Non-fiction

// E. VanderLei.

/ British Literature of the Middle Ages



Modern British and American Poetry

English Grammar

W. Van deKopple, W. van den Bosch

Chaucer

K. Saupé, G. R. Minitt

Shakespeare

C. Engbers, S. Felch, K. Saupé, D. Rienstra, D. Urban

Milton

C. Engbers, D. Urban

Major Authors

Creative Writing

D. Rienstra, J. Timmermans

Language, Grammar, and Writing for the Elementary

W. Van deKopple

Teaching of Writing

E. Underhill

Seminar in Principles of and Practice in Secondary Education

W. Van deKopple

Literary Theory and Criticism

S. Felch

Publishing in Journals and Online Writing

Hettinga

Independent Study

Staff

Series Seminar

Academic Departments and Courses

Requirements for all ESL minors:





Teacher Education
Program Guidebook

Konyak

Multisensory Structured French I

Study in France

Konyak

Introductory French

COURSES

Elementary French I

C. Selles

Elementary French II

L. Mathews

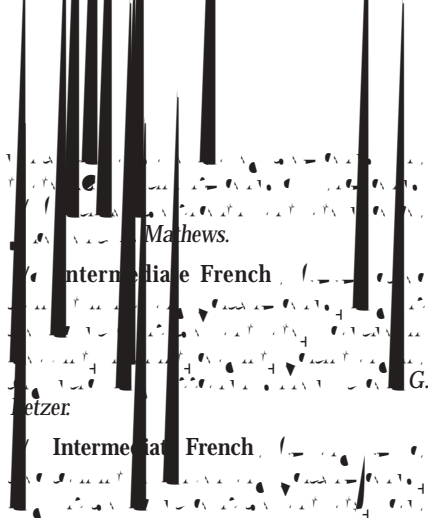
Multisensory Structured French I

Mathews, Saff

Intermediate French

I. Konyak

Multisensory Structured French I



Mathews.

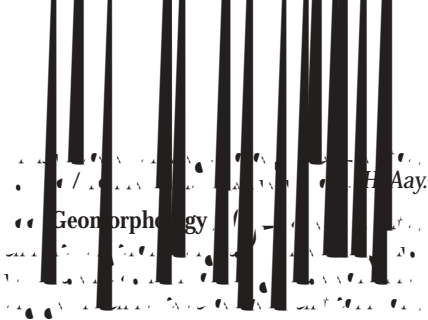
Intermediate French

G.

Petzer:

Intermediate French





Geomorphology

Aay.

Dijk

Introduction of Geology

Geology

Geology

Geology

Geology

Geology

Geology

Geology

Geology

Geology

Geology

Geology

Geology

Geology

Geology

Geology

Geology

Geology

Geology

Geology

Geology

Geology

Geology

Geology

Geology

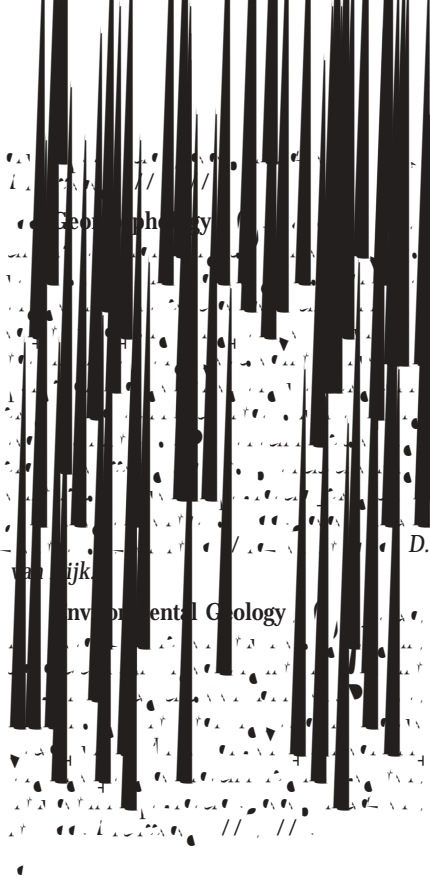
Geology

Geology

Geology

Geology

Academic Departments
and Courses



Geophysics

D.

ijk

Environmental Geology

/ Independent Study / Staff.

German

Professor B. Carville
Assistant Professor (H. De Vries Chair), D. Ammin
Research Associate P. Dykstra-Poirier

**GERMAN MAJOR
(30-32 semester hours)**

**GERMAN ELEMENTARY AND
SECONDARY EDUCATION MINOR (22
semester hours)**

**GERMAN MINOR
(20-22 semester hours)**

**GERMAN ELEMENTARY AND
SECONDARY EDUCATION MAJOR (34
semester hours)**

Teacher
Education Program Guidebook

Health, Physical Education, Recreation, Dance, and Sport

Professors D. Bakker, L. De Graaf, K. G. J. N. Muijs, E. Van Amels (chair), M. Zuidema
 Associate Professor J. Tim, J. Timmer, J. C. Van der Spek
 Assistant Professors J. Bergsma, J. Pettinau, M. Romanno, J. Ross, E. van't Hof
 T. Walton, A. Walmers

PHYSICAL EDUCATION MAJOR*

Required Cognate

PHYSICAL EDUCATION MINOR

EXERCISE SCIENCE

Cognates

K-12 TEACHER EDUCATION/ PHYSICAL EDUCATION MAJOR

Required Cognate

SECONDARY EDUCATION PHYSICAL EDUCATION MINOR

COMMUNITY RECREATION

RECREATION MINOR

DANCE MINOR

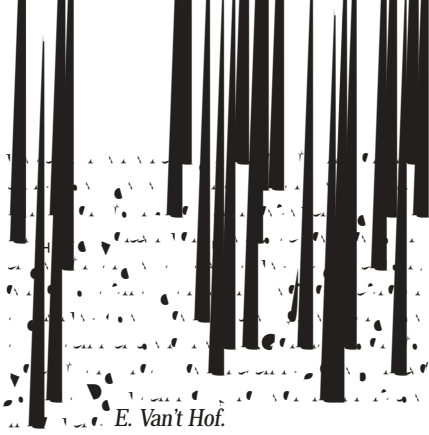
Modern ballet, jazz, tap, or sacred dance



Basic Athletic Training

B. Couvrear

/ Team Sports Assessment



E. Van't Hof.

Philosophy of Physical Education and

Academic Departments
and Courses

/ Management of Leisure Services /

History

Professors D. Bays, M. Bendrich, T. Pratt, J. Carpenter, E. de Vries, **D. De Houw, D. Howard (chair), D. Miller, W. van Veen, **R. Willems
Associate Professor R. Jelkx, W. Koerberg, **K. Mang, van Liere, K. van Liere
Assistant Professor A. Berglund, P. Schoor-Jongebloed

WORLD HISTORY MAJOR/

nm-0.013 TWONRHH ID: 01262021

U.S. HISTORY MAJOR/SECONDARY OR

U.S. HISTORY MAJOR

U.S. HISTORY MAJOR

In addition to the courses listed in the major, all secondary education history majors must take three additional cognate courses: 1) Political Science 100; 2) Geography 110; and 3) Economics 150.

NON-EDUCATION HISTORY MINOR

**SECONDARY EDUCATION
HISTORY MINOR**

**ELEMENTARY EDUCATION
HISTORY MINOR**

**ELEMENTARY SOCIAL STUDIES
GROUP MAJOR**

**ELEMENTARY AND SECONDARY
SOCIAL STUDIES GROUP MINOR**

COURSES

Elementary Courses
History of the West and the World

Staff.

World Civilization: Peace and War in
Ancient Societies and States

Teacher Education Program
Guidebook

Prior to the teaching internship, students must have the approval of the department. Criteria for approval are found in the Teacher Education Program Guidebook, available in the Education Department.

Academic Departments
and Courses



Mexico and the Americas

1900-1950

1950-1980

1980-2000

2000-Present

World War II

1945-1950

1950-1960

1960-1970

1970-1980

1980-1990

1990-2000

Religion, Society, and Culture in 19th-Century America

1900-1950

1950-1980

1980-2000

2000-Present

World War II

1945-1950

1950-1960

1960-1970

1970-1980

1980-1990

1990-2000

Mexico and the Americas

1900-1950

1950-1980

1980-2000

2000-Present

World War II

1945-1950

1950-1960

1960-1970

1970-1980

1980-1990

1990-2000

2000-Present

World War II

1945-1950

1950-1960

1960-1970

1970-1980

1980-1990

1990-2000

2000-Present

Religion, Society, and Culture in 19th-Century America

1900-1950

1950-1980

1980-2000

2000-Present

World War II

1945-1950

1950-1960

1960-1970

1970-1980

1980-1990

1990-2000

2000-Present

World War II

1945-1950

1950-1960

1960-1970

1970-1980

1980-1990

1990-2000

2000-Present

Mexico and the Americas

1900-1950

1950-1980

1980-2000

2000-Present

World War II

1945-1950

1950-1960

1960-1970

1970-1980

1980-1990

1990-2000

2000-Present

World War II

1945-1950

1950-1960

1960-1970

1970-1980

1980-1990

1990-2000

2000-Present

Religion, Society, and Culture in 19th-Century America

1900-1950

1950-1980

1980-2000

2000-Present

World War II

1945-1950

1950-1960

1960-1970

1970-1980

1980-1990

1990-2000

2000-Present

World War II

1945-1950

1950-1960

1960-1970

1970-1980

1980-1990

1990-2000

2000-Present

Mexico and the Americas

1900-1950

1950-1980

1980-2000

2000-Present

World War II

1945-1950

1950-1960

1960-1970

1970-1980

1980-1990

1990-2000

2000-Present

World War II

1945-1950

1950-1960

1960-1970

1970-1980

1980-1990

1990-2000

2000-Present

Religion, Society, and Culture in 19th-Century America

1900-1950

1950-1980

1980-2000

2000-Present

World War II

1945-1950

1950-1960

1960-1970

1970-1980

1980-1990

1990-2000

2000-Present

World War II

1945-1950

1950-1960

1960-1970

1970-1980

1980-1990

1990-2000

2000-Present

Academic Departments
and Courses

11 / 11 / 11
World History
11 / 11 / 11

11 / 11 / 11
World History
11 / 11 / 11

11 / 11 / 11
World History
11 / 11 / 11

11 / 11 / 11
European Studies in Medieval History
11 / 11 / 11

11 / 11 / 11
European Studies in Medieval History
11 / 11 / 11

11 / 11 / 11
European Studies in Medieval History
11 / 11 / 11

11 / 11 / 11
European Studies in Medieval History
11 / 11 / 11

11 / 11 / 11
European Studies in Medieval History
11 / 11 / 11

11 / 11 / 11
European Studies in Medieval History
11 / 11 / 11

11 / 11 / 11
European Studies in Medieval History
11 / 11 / 11

11 / 11 / 11
European Studies in Medieval History
11 / 11 / 11

11 / 11 / 11
European Studies in Medieval History
11 / 11 / 11

11 / 11 / 11
European Studies in Medieval History
11 / 11 / 11

11 / 11 / 11
European Studies in Medieval History
11 / 11 / 11

11 / 11 / 11
European Studies in Medieval History
11 / 11 / 11

11 / 11 / 11
European Studies in Medieval History
11 / 11 / 11

11 / 11 / 11
European Studies in Medieval History
11 / 11 / 11

11 / 11 / 11
World History
11 / 11 / 11

11 / 11 / 11
World History
11 / 11 / 11

11 / 11 / 11
World History
11 / 11 / 11

11 / 11 / 11
World History
11 / 11 / 11

11 / 11 / 11
World History
11 / 11 / 11

11 / 11 / 11
World History
11 / 11 / 11

11 / 11 / 11
World History
11 / 11 / 11

11 / 11 / 11
World History
11 / 11 / 11

11 / 11 / 11
World History
11 / 11 / 11

11 / 11 / 11
World History
11 / 11 / 11

11 / 11 / 11
World History
11 / 11 / 11

11 / 11 / 11
World History
11 / 11 / 11

11 / 11 / 11
World History
11 / 11 / 11

11 / 11 / 11
World History
11 / 11 / 11

11 / 11 / 11
World History
11 / 11 / 11

11 / 11 / 11
World History
11 / 11 / 11

11 / 11 / 11
World History
11 / 11 / 11



Staff.

Museum Studies

Research Seminar

Academic Departments
and Courses

C. Pers
Contextual Diversity Studies

J. Jadrna.

The Contemporary American Religious Situation

Sa.

Introductory Meteorology

Access to the

L. Bosch

Social Structures and Education as Social Inequality

D. Sora

Communication and Learning in the Natural Sciences (I)

Staff
/ Introduction to Medieval Studies



Japanese Language and Literature

Associate Professor L. Hemberger
Assistant Professor H. De Vries (Chair)

Academic Departments
and Courses

JAPANESE MINOR

MATHEMATICS MINOR

MA 101 /
MA 102 /
MA 103 /

ELEMENTARY/SECONDARY EDUCATION MATHEMATICS MAJOR

MA 101 /
MA 102 /
MA 103 /
MA 104 /
MA 105 /
MA 106 /
MA 107 /
MA 108 /
MA 109 /
MA 110 /
MA 111 /
MA 112 /
MA 113 /
MA 114 /
MA 115 /
MA 116 /
MA 117 /
MA 118 /
MA 119 /
MA 120 /

Cognates

MA 101 /
MA 102 /

SECONDARY EDUCATION MATHEMATICS MINOR

MA 101 /
MA 102 /
MA 103 /
MA 104 /
MA 105 /
MA 106 /
MA 107 /
MA 108 /
MA 109 /
MA 110 /
MA 111 /
MA 112 /
MA 113 /
MA 114 /
MA 115 /
MA 116 /
MA 117 /
MA 118 /
MA 119 /
MA 120 /

Cognates

MA 101 /
MA 102 /

ELEMENTARY EDUCATION MATHEMATICS MINOR

MA 101 /
MA 102 /
MA 103 /
MA 104 /
MA 105 /
MA 106 /
MA 107 /
MA 108 /
MA 109 /
MA 110 /
MA 111 /
MA 112 /
MA 113 /
MA 114 /
MA 115 /
MA 116 /
MA 117 /
MA 118 /
MA 119 /
MA 120 /
MA 121 /
MA 122 /
MA 123 /
MA 124 /
MA 125 /
MA 126 /
MA 127 /
MA 128 /
MA 129 /
MA 130 /
MA 131 /
MA 132 /
MA 133 /
MA 134 /
MA 135 /
MA 136 /
MA 137 /
MA 138 /
MA 139 /
MA 140 /
MA 141 /
MA 142 /
MA 143 /
MA 144 /
MA 145 /
MA 146 /
MA 147 /
MA 148 /
MA 149 /
MA 150 /
MA 151 /
MA 152 /
MA 153 /
MA 154 /
MA 155 /
MA 156 /
MA 157 /
MA 158 /
MA 159 /
MA 160 /
MA 161 /
MA 162 /
MA 163 /
MA 164 /
MA 165 /
MA 166 /
MA 167 /
MA 168 /
MA 169 /
MA 170 /
MA 171 /
MA 172 /
MA 173 /
MA 174 /
MA 175 /
MA 176 /
MA 177 /
MA 178 /
MA 179 /
MA 180 /
MA 181 /
MA 182 /
MA 183 /
MA 184 /
MA 185 /
MA 186 /
MA 187 /
MA 188 /
MA 189 /
MA 190 /
MA 191 /
MA 192 /
MA 193 /
MA 194 /
MA 195 /
MA 196 /
MA 197 /
MA 198 /
MA 199 /
MA 200 /

Teacher Education Program Guidebook

Academic Departments
and Courses

Pr-Calculus Mathematics

Staff.

Calculus for Management, Life and Social Sciences

Staff

Introduction to Probability and Statistics

Staff

Discrete Mathematics for Computer Science

Staff

Elementary Functions and Calculus

Staff

Elementary Functions and Calculus II

Staff

Calculus I

Staff

Calculus II

Staff

Two-Year Seminar in Mathematics

Staff

M. Hanisch, J. Turner



Introduction to Teaching Secondary
School Mathematics

J. Kopp

Partial Differential Equations

P. Wagsstrom

Numerical Analysis

A. D. Fri

Probability and Statistics

J. Bradley

Mathematical Statistics

J. Bradley

Abstract Algebra

P. Lands

Abstract Linear Algebra

Seminar in Secondary Teaching of Math-
ematics

G. Tals

Real Analysis

R. Bruin

Real Analysis II

T. Scofield

Complex Variables

H. Hirsch

Advanced Logic

Independent Study

Staff
Senior Thesis in Mathematics
Staff

Medieval Studies

GROUP MINOR IN MEDIEVAL STUDIES

History and Ideas:

Literature and Language:

Music

Professors K. Brattigam, L. DeYoung, D. Fuenkes, J. Hamersma, H. Kim, C. Sawyer,
P. Shanghaui (chair), C. Stabert
Associate Professors J. Wittlieb, J. Zavarnitski
Instructors J. Hill, B. Kuylenstierna, J. Northington

Evening Book

Students with any possible plans concerning further music study should enroll in Music 105 as their

fine arts core course for this class provides counsel about the various programs and the individual student's qualifications for each. Another option for students with some musical background who desire core credit is Music 204. Students with more limited musical experiences may prefer Music 103, 106, or 236 as their core course elective in music. Music 238 earns core credit for elementary education, recreation, and social work students.

MUSIC MAJOR (28 semester hours)*

**Additional Requirements
(9 semester hours)**

MUSIC MINOR (21 semester hours)

**MUSIC THEORY/COMPOSITION
CONCENTRATION**

Basic music courses
**Additional Requirements
(20 semester hours)**

APPLIED MUSIC CONCENTRATION

Basic music courses

MUSIC HISTORY CONCENTRATION

Basic music courses
**Additional Requirements
(20 semester hours)**

MUSIC IN WORSHIP MAJOR

Basic music courses
**Additional Requirements
(29 semester hours)**

A musical score on a staff with a treble clef and a 4/4 time signature. The notation includes various note values, rests, and bar lines. The text is overlaid on the middle of the staff.

MUSIC IN WORSHIP MINOR
(19 semester hours)

SECONDARY MUSIC
EDUCA



Music History

B. Kerkenda

History and Philosophy of Music in
Worship

J. Hamersma.eviojTj/Fsch4f061 fln[tl.

French.
Meaning and Poetics

French.
Meaning and Poetics

French.
Meaning and Poetics

C. Stepper

Advanced Courses
Poetics

Christian Worship
Conducting

J. Favarr
Congregational Singing Christian Wor-
ship

Music Form and Syntax

E. Brink

Music Form and Syntax

D. Fuentes.

A Polyphony of the Renaissance

Total Counterpoint

Instrumentation

French.
Orchestration

D. Fuentes.
Composition: Beginning

/ **Vtments**

Capella

D. De Young.

Orchestra

J. Nevar

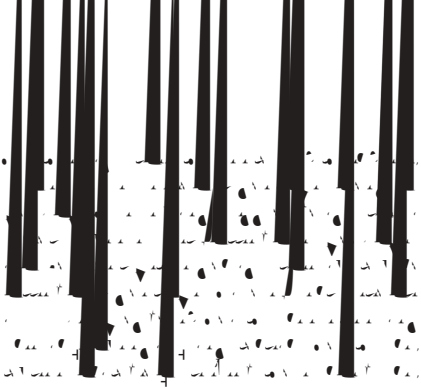
Holocaust Band

D. De Young.

Calvin Band

COURSES

/ • Theory: Community Based and Mental Health Nursing



Of-Campus Programs

UNIVERSITY SPONSORED PROGRAMS

Semester in Britain

Semester in China

Traditional Chinese Civilization

/ in China

Academic Departments
and Courses

Development Theory in Practice

Development Theory in Practice

The Culture and Poetics of Ghanaian
West Africa

Spanish Language Studies

Development Studies in Honduras

Spanish Studies - Honduras

Language and Culture in Honduras

Language and Culture in Honduras

Poverty and Development

Poverty and Development

Exploring the Third World Society

Engaging Honduran Culture

The Problem of Poverty

Advanced Conversation

Academic Departments
and Courses

• **Latin American Culture**, *1990-2000*

History of Religion and Society in Urban



UCLA College

Latin American Studies Program

Middle East Studies Program (MESP)

Los Angeles Film Studies
Center Program

Academic Departments
and Courses

Law, Politics, and Legal Practice

Ethics

Development

Understanding the Social Sciences: Literature, Statistics, and Methods

Culture

Justice and the Common Good: Studies in Moral Philosophy

God and Philosophy

Homework

Philosophy of the Arts and Culture

Academic Departments
and Courses

Kant, Immanuel

**SECONDARY EDUCATION PHYSICS
MINOR:**

OPTICS MINOR

At least 21 hours, including:

HONORS

PHYSICS/COMPUTER SCIENCE GROUP MAJOR

Scientific Practices for Elementary School Teachers

Courses

Introduction: Physics, Mechanics and Gravity

COURSES

Introduction Course
Physics Science

Matter, Space and Energy

Physical and Earth Science for Elementary School Teachers



Physics and Astronomy Student Center
1000 University Blvd
Durham, NC 27708
919.919.7400

Advanced Theory Courses
/ Introduction to Quantum Physics

Classical Mechanics

Academic Departments
and Courses

Political Science

Professors R. De Vries, J. Hoopman, J. Pennin, E. Smidt, *V. Stevens (chair)
Assistant Professors *S. Go, M. Smith, A. Patterson

POLITICAL SCIENCE MAJOR: 33 semester hours

**POLITICAL SCIENCE MAJOR:
INTERNATIONAL RELATIONS
CONCENTRATION
(33 semester hours plus twelve
approved cognate hours)**

**POLITICAL SCIENCE MAJOR: PUBLIC
ADMINISTRATION CONCENTRATION
(33 semester hours plus four approved
cognate courses)**

POLITICAL SCIENCE MINOR: 21 semester hours

SECONDARY EDUCATION POLITICAL SCIENCE MINOR

ELEMENTARY SOCIAL STUDIES GROUP MAJOR

**ELEMENTARY AND SECONDARY
SOCIAL STUDIES GROUP MINOR**

INTERNSHIP

HONORS

COURSES

1/ American Politics

ending

Public Administration

J. Pen-

ning.

American Political Policy

J. Penning

Political Ideas in Historical Perspective

W. Steverson, S. G. D. Koopman.

Methods in Political Analysis

Com-

Decision and Politics: A Comparative
Research

A. Patterson

West European Politics

Internships in State or Local Government / Christian Faith and Public Life

J. Manning.

/ Independent study

Staff.

Academic Departments
and Courses

HONOR

INTERNSHIP

PSYCHOLOGY MINOR

SECONDARY EDUCATION
PSYCHOLOGY MINOR

L. Iltis and S. Stehower

Human Sexuality and Gender

C. Bivers and S.

Statistical Research Design

A. S. Senake

Fundamentals of Research Methods

Introduction

The Issues of Theory and Practice in
Clinical and Organizational Settings

S. Stehower

Organizational Psychology

Academic Departments
and Courses

Theories of Personality

G. Weaver

Psychology: Sensation and Perception

Link.

Principles of Psychological Measurement

Psychology: Learning Processes

Theories of Counseling and Psychotherapy

Brain and Behavior

S. Stebbins

Psychology of Motivation

P. Moes

Positive Psychology

Academic Departments
and Courses

Religion

Professors *D. Crump, C. de Groot, A. Griffioen, *R. Plantinga, K. Pomykala (chair)

*J. Schneider, T. Thompson, R. Whitkettle

Associate Professors B. Cushman, W. Lee

Assistant Professors C. Farrelman, K. Holz, D. Harlow, M. Matthews, L. Smet

Adjunct Associate Professor J. Witvliet

GENERAL MAJOR





The Doctrine of God

... *Hartig*
... Introduction of Missions

... *Farhad*

... **Advanced Theological Studies**
... Christianity and Culture

... *Griffiths*

... Studies in Early and Medieval Theology
... Augustines and the Augustinian Tradition

... *Smith*

... Theology: Theory and Method

... Studies in Reformation Theology

... Studies in Contemporary Theology

... *Thompson*

... Theological Ethics

... **Religious Studies**

... Introduction to the Study of Religion

... *Hotz*

... **Studies in Roman Catholic Theology:**
... Contemporary Catholic Theology

Academic Departments
and Courses



SOCIAL WORK (B.S.W.)

Third year

Semester hours

Fourth year

Semester hours

Social Work Handbook

Social

SOCIAL WORK MINOR

SOCIAL WORK FOUNDATIONS

COURSES

Sociology

Sociological Imagination and Perspective

SOCIAL WORK INTERNSHIP

SOCIAL WORK MAJOR

Principles of Sociology, Dr. Lloyd-Paige, 1st Year

Introduction to Cultural Anthropology

Academic Departments
and Courses



ELEMENTARY EDUCATION MINOR IN SPANISH (20-22 HOURS)

BILINGUAL EDUCATION GRADUATE MINOR FOR ELEMENTARY EDUCATION (25 hours)

BILINGUAL EDUCATION GRADUATE MINOR FOR SECONDARY EDUCATION (25 hours)

ENGLISH AS A SECOND LANGUAGE ENDORSEMENT – ELEMENTARY OR SECONDARY EDUCATION (33 hours)

Teacher Education Guidebook

The advisors for the ESL programs are M. Pyper and J. Vande Lief.

INFORMATION FOR EDUCATION STUDENTS

Teacher Education Program Guidebook

All students in the departmental education programs must pass by the junior year, an oral and written Spanish Department proficiency examination prior to enrolling for the teaching internship.

The advisor for the elementary education and bilingual programs is M. Pyper.

CREDIT/EXEMPTION EXAMS

Spanish Literature from the Middle Ages through the Renaissance
// D. Zardetto

Spanish Literature of the Golden Age
// D. Zardetto

Spanish Literature of the Eighteenth Century to the Present
// A. Tighehar

Spanish Literature from the Eighteenth Century to the Present
// A. Tighehar

Independent Study
Seminar

Culture courses
Hispanic Culture of the United States

Hispanic Civilization and Culture
// A. Hernandez-Rene

Hispanic Civilization and Culture
// A. Hernandez-Rene

Business Spanish
// J. Leder

Business Spanish
// J. Leder

Education Courses
// S. Cleveland

Education Courses
Foreign Language Education in the Elementary School
// S. Cleveland

Introduction to Foreign Language Pedagogy
// M. Pyper

Academic Departments and Courses



D. Smith.

Aiding in the Foreign Language Classroom

Academic Departments
and Courses

Interim 2004

DEVELOPING THE CHEIST OF MIND INTERIMS

Number	Title	Instructor
100	Introduction to Psychology	Dr. [Name]
101	Developmental Psychology	Dr. [Name]
102	Biological Psychology	Dr. [Name]
103	Abnormal Psychology	Dr. [Name]
104	Psychology of Learning and Memory	Dr. [Name]
105	Psychology of Language	Dr. [Name]
106	Psychology of Thought and Reasoning	Dr. [Name]
107	Psychology of Personality	Dr. [Name]
108	Psychology of Social Interaction	Dr. [Name]
109	Psychology of Health and Behavior	Dr. [Name]
110	Psychology of Aging	Dr. [Name]
111	Psychology of Women	Dr. [Name]
112	Psychology of Men	Dr. [Name]
113	Psychology of the Elderly	Dr. [Name]
114	Psychology of the Young Adult	Dr. [Name]
115	Psychology of the Middle-aged	Dr. [Name]
116	Psychology of the Adolescent	Dr. [Name]
117	Psychology of the Child	Dr. [Name]
118	Psychology of the Infant	Dr. [Name]
119	Psychology of the Toddler	Dr. [Name]
120	Psychology of the Preschooler	Dr. [Name]
121	Psychology of the School-age Child	Dr. [Name]
122	Psychology of the Teenager	Dr. [Name]
123	Psychology of the Young Adult	Dr. [Name]
124	Psychology of the Middle-aged	Dr. [Name]
125	Psychology of the Elderly	Dr. [Name]

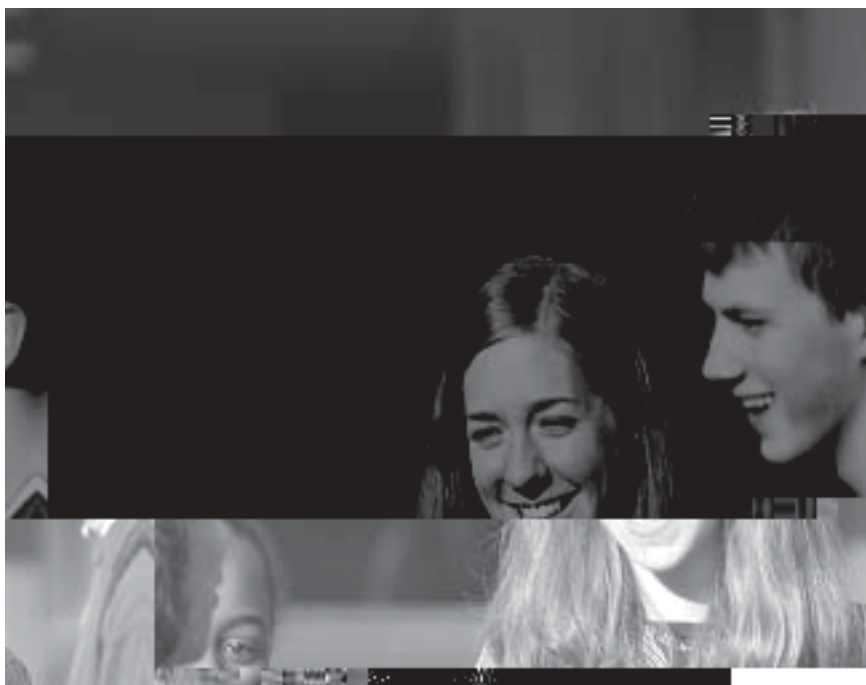
OTHER INTERIMS

Number	Title	Instructor
100	Psychology of Learning and Memory	Dr. [Name]
101	Psychology of Language	Dr. [Name]
102	Psychology of Thought and Reasoning	Dr. [Name]
103	Psychology of Personality	Dr. [Name]
104	Psychology of Social Interaction	Dr. [Name]
105	Psychology of Health and Behavior	Dr. [Name]
106	Psychology of Aging	Dr. [Name]
107	Psychology of Women	Dr. [Name]
108	Psychology of Men	Dr. [Name]
109	Psychology of the Elderly	Dr. [Name]
110	Psychology of the Young Adult	Dr. [Name]
111	Psychology of the Middle-aged	Dr. [Name]
112	Psychology of the Adolescent	Dr. [Name]
113	Psychology of the Child	Dr. [Name]
114	Psychology of the Infant	Dr. [Name]
115	Psychology of the Toddler	Dr. [Name]
116	Psychology of the Preschooler	Dr. [Name]
117	Psychology of the School-age Child	Dr. [Name]
118	Psychology of the Teenager	Dr. [Name]
119	Psychology of the Young Adult	Dr. [Name]
120	Psychology of the Middle-aged	Dr. [Name]
121	Psychology of the Elderly	Dr. [Name]

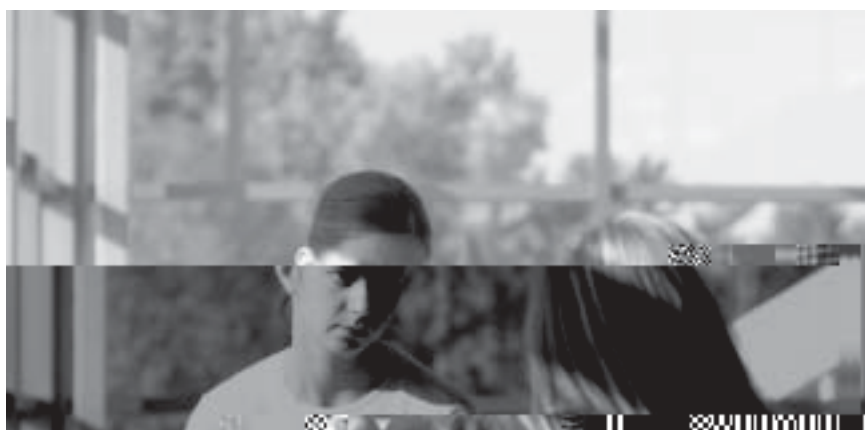
Academic Departments
and Courses

1.1 / 1.2 / 1.3 / 1.4 / 1.5 / 1.6 / 1.7 / 1.8 / 1.9 / 1.10 / 1.11 / 1.12 / 1.13 / 1.14 / 1.15 / 1.16 / 1.17 / 1.18 / 1.19 / 1.20 / 1.21 / 1.22 / 1.23 / 1.24 / 1.25 / 1.26 / 1.27 / 1.28 / 1.29 / 1.30 / 1.31 / 1.32 / 1.33 / 1.34 / 1.35 / 1.36 / 1.37 / 1.38 / 1.39 / 1.40 / 1.41 / 1.42 / 1.43 / 1.44 / 1.45 / 1.46 / 1.47 / 1.48 / 1.49 / 1.50 / 1.51 / 1.52 / 1.53 / 1.54 / 1.55 / 1.56 / 1.57 / 1.58 / 1.59 / 1.60 / 1.61 / 1.62 / 1.63 / 1.64 / 1.65 / 1.66 / 1.67 / 1.68 / 1.69 / 1.70 / 1.71 / 1.72 / 1.73 / 1.74 / 1.75 / 1.76 / 1.77 / 1.78 / 1.79 / 1.80 / 1.81 / 1.82 / 1.83 / 1.84 / 1.85 / 1.86 / 1.87 / 1.88 / 1.89 / 1.90 / 1.91 / 1.92 / 1.93 / 1.94 / 1.95 / 1.96 / 1.97 / 1.98 / 1.99 / 2.00

1.1 / 1.2 / 1.3 / 1.4 / 1.5 / 1.6 / 1.7 / 1.8 / 1.9 / 1.10 / 1.11 / 1.12 / 1.13 / 1.14 / 1.15 / 1.16 / 1.17 / 1.18 / 1.19 / 1.20 / 1.21 / 1.22 / 1.23 / 1.24 / 1.25 / 1.26 / 1.27 / 1.28 / 1.29 / 1.30 / 1.31 / 1.32 / 1.33 / 1.34 / 1.35 / 1.36 / 1.37 / 1.38 / 1.39 / 1.40 / 1.41 / 1.42 / 1.43 / 1.44 / 1.45 / 1.46 / 1.47 / 1.48 / 1.49 / 1.50 / 1.51 / 1.52 / 1.53 / 1.54 / 1.55 / 1.56 / 1.57 / 1.58 / 1.59 / 1.60 / 1.61 / 1.62 / 1.63 / 1.64 / 1.65 / 1.66 / 1.67 / 1.68 / 1.69 / 1.70 / 1.71 / 1.72 / 1.73 / 1.74 / 1.75 / 1.76 / 1.77 / 1.78 / 1.79 / 1.80 / 1.81 / 1.82 / 1.83 / 1.84 / 1.85 / 1.86 / 1.87 / 1.88 / 1.89 / 1.90 / 1.91 / 1.92 / 1.93 / 1.94 / 1.95 / 1.96 / 1.97 / 1.98 / 1.99 / 2.00



Academic Departments
and Courses



Financial Information

Tuition and Fees

Tuition	\$ 400
Books	100
Supplies	50
Room and Board	150
Transportation	50
Personal Expenses	50
Health Insurance	50
Student Activities	50
Student Government	50
Student Union	50
Student Center	50
Student Services	50
Student Health	50
Student Counseling	50
Student Financial Aid	50
Student Employment	50
Student Leadership	50
Student Organizations	50
Student Clubs	50
Student Groups	50
Student Committees	50
Student Council	50
Student Government	50
Student Union	50
Student Center	50
Student Services	50
Student Health	50
Student Counseling	50
Student Financial Aid	50
Student Employment	50
Student Leadership	50
Student Organizations	50
Student Clubs	50
Student Groups	50
Student Committees	50
Student Council	50

Basic Charges

Tuition	\$ 400
Books	100
Supplies	50
Room and Board	150
Transportation	50
Personal Expenses	50
Health Insurance	50
Student Activities	50
Student Government	50
Student Union	50
Student Center	50
Student Services	50
Student Health	50
Student Counseling	50
Student Financial Aid	50
Student Employment	50
Student Leadership	50
Student Organizations	50
Student Clubs	50
Student Groups	50
Student Committees	50
Student Council	50

Deposits

Tuition	50
Books	100
Supplies	50
Room and Board	150
Transportation	50
Personal Expenses	50
Health Insurance	50
Student Activities	50
Student Government	50
Student Union	50
Student Center	50
Student Services	50
Student Health	50
Student Counseling	50
Student Financial Aid	50
Student Employment	50
Student Leadership	50
Student Organizations	50
Student Clubs	50
Student Groups	50
Student Committees	50
Student Council	50

Scholarships and Financial Aid

Enrollment Requirements for Financial Aid

Measurement of Progress

Number of Credit Hours Attempted	Percent Completion Required	Cumulative GPA Required
	%	./
	%	/
	%	/
	/%	/
	%	/
	%	/
	/%	/

Notes

evaluating progress

Appeal

Denominational Grants

regula



General College Scholarships

Scholarships for Transfer Students

Post-Baccalaureate Scholarship

Calvin Mosak Awards and Multicultural Awards

Family Scholarship

Besicwiz Scholarship for Students with Disabilities

Board of Trustees Scholarships

Nicholas and Pauline Manni Memorial Scholarship

J. Russel ... Scholarship

Dr. and Mrs. Harvey ... Medical School Scholarship

Ronald Buikema Memorial Scholarship



Detroit DeWitt Family Scholarship

Michigan State Memorial Scholarship

DeWitt Family Scholarship

Financial Information



Walter and Ruth Donnanish Family Jean's Scholarship

Wickens Family Honors Scholarship

Rev. Donald J. Frost Memorial Scholarship

Andy J. Ligan Downey Scholarship

Lynsne Family Non-Traditional Student Scholarship

Elmhurst Christian Reformed Church Scholarship

Financial Information



Carroll Sandra Gonsky Family Scholarship





Milton and Carol Keynes Family Music Award

Wilbur M. Lettinga Family Scholarship

Financial Information

Mentoring and Family Scholarships

Mentoring Scholarships

Mobilizing Scholarships

David M. O'Connor Family Scholarship

Geoffrey J. Peters Scholarship

Mildred and Betty O'Connor Family Scholarship

Johannes and Charlotte Moss Bekke Memorial Faculty Honorarium

Robert T. and Charlotte O'Connor Scholarship

Alan and Jan Pauw Family Scholarship

Merle J. and Arnold J. Harris Family Presidential Scholarship

Race Relations and Financial Student Scholarship

Miriam C. Roskin Memorial Scholarship

Anna M. Sieber Scholarship

James H. Smith Presidential Scholarship

Paul K. Memorial Johnson Scholarship

Steelcase Foundation Scholarship

Wilma Stoketee-Bowen Scholarship

Edward C. and Hazel L. Stephenson Foundation Scholarship

Arvin and Pearl Kaplan Family Scholarship

Wilma Zondervan Tiggelaar Family Scholarship

Martha P. and Florence De Graaff Wiebenga

Samuel J. Westerman Foundation Scholarship

Peter and Esther Westerman Family Honor Scholarship

Johny and Patricia Westveer Scholarship

**Wolflaw Christian Reformed Church
Memorial Scholarship**

Gertrude and Zwiop Memorial Scholarship



Chemistry Department
John A. Entler Memorial Scholarship

John and Margaret (Hall) DeMaan Chem
istry Scholarship

Jann Jassen Notbom Scholarship

**Van der Gucht Award in Communication
Distinctions**

Grace Nykström de la Schaar Scholarship

**Economics and Business Department
Clarence and New Battle Memorial Scholarship**

Frank and Bernice Lepp Family Scholarship

Levin Business Scholarship

Monroe LeVries Scholarship

Paulina S. Dunbar Scholarship

J. Herman and N. Lucile Miles Scholarship

Ross Business Scholarship

Jacob and Janis Tuinstra Scholarship

Charles J. Van DenBerg Family Business Scholarship





**Schutz-Weinoff Family Christian Fellowship
Education Scholarship**

Irene and Carol Fadden Boston Scholarship

Marion and Nell Stepper Family Scholarship

Angeline Nyman Boehlert Memorial Scholarship

Financial Information

James W. Lyke Education Scholarship



Hughston and Mercer Science Scholarship

Dr. Barney Steen Scholarship in Physical Education

**History Department
John DeBevoise History Scholarship**

Paul D. Coe Stein Scholarship

Earl Strikwerda Memorial Scholarship

**Mathematics and Statistics Department
Benjamin E. and Jeanne G. Morrison and
Scholarship**

Paul J. and Eleanor Zwier Family Scholarship

Arnold Christopher Minderhut Memorial
Scholarship

Rainbow Foundation Wind Scholarship

Music Department Applied Music Schol-
arship

John Springs Wind Scholarship

Norman and Anne Doozebos Keyboard
Scholarship

Sylvia and Svets Voice Scholarship

Oratorio Society Applied Music Schol-
arship

**John R. and Marie A. Swieringa Bass
Scholarship**

Vander Horst Music Scholarship

**Judith Vroon Vander Zee Music Education
Scholarship**

**John and Doris Kessel Music Scholar-
ship**

**Vander Haagen Family Scholarship for
Church Musicians**

John and Betty Zander Music Scholarship

Laura Ann Worst Memorial Music Scholarship

Johanna Kerkens Vandergrader Scholarship

Joan and Betty Zander Organ Music Scholarship

Gerald and Adolma Zinsmeister Scholarship

Nursing Department Leah Berends Nursing Scholarship

James Logan Nursing Scholarship

Theodore P. and Ruth Deeks Scholarship

Bryan Dylstra Nursing Scholarship

Wilma Byrnes Kregel Memorial Nursing Scholarship

David and Shirley Hoops Scholarship

Kent Medical Foundation Grant

Major and Nancy Kurek Family Nursing Scholarship

Blaise, Elise and Mickey Morien Memorial Scholarship

Financial Information

John and Minnie Weston Scholarship

The John and Minnie Weston Scholarship is awarded annually to a student who has demonstrated exceptional academic achievement and leadership. The scholarship is named in honor of John and Minnie Weston, who were instrumental in the founding of the university. The recipient of the scholarship will receive a full tuition and fee waiver for one year of study. The scholarship is open to all students who are currently enrolled in the university and who have completed at least one year of college. The recipient of the scholarship will be selected by a committee of faculty members. The scholarship is awarded to students who have demonstrated exceptional academic achievement and leadership. The recipient of the scholarship will receive a full tuition and fee waiver for one year of study. The scholarship is open to all students who are currently enrolled in the university and who have completed at least one year of college. The recipient of the scholarship will be selected by a committee of faculty members.



Learn the Joy in a Memorial Scholarship

Need-Based Financial

Vanderploeg-Elderly Scholarship

Marjorie E. Marten-Bosch-Zwolski Scholarship in Social Work and Sociology

Exchange Grant for Canadian Students

**Spanish Department
Edna Greenway Scholarship**

Grants for Off-Campus Programs

Michigan Competitive Scholarships and Tuition Grants

Canada Student Loans

Alberta Financial Loan Program

Student Fellowship

The Jubilee Fellowship Program

**Fellowships in the Natural Sciences, Social Sciences, and Humanities
Bedford Fellows Summer Research Fellowship**

Carance Paul and Irene Talen Star Student Research Fellowship

Student Faculty Research Fund in the Sciences

Miller Student Research Fellowship

Open to students in the Humanities and Social Sciences. The award is given to the student who has demonstrated exceptional academic achievement and who has submitted a research paper of exceptional quality. The award is given annually to one student. The award is \$1,000.

Student Research Fellowship in the Humanities and Social Sciences

Open to students in the Humanities and Social Sciences. The award is given to the student who has demonstrated exceptional academic achievement and who has submitted a research paper of exceptional quality. The award is given annually to one student. The award is \$1,000.

Jubilee Fellowship

Ian and Gertrude Vos Jubilee Fellowship

Open to students in the Humanities and Social Sciences. The award is given to the student who has demonstrated exceptional academic achievement and who has submitted a research paper of exceptional quality. The award is given annually to one student. The award is \$1,000.

Westerbeek Family Jubilee Fellowship

Open to students in the Humanities and Social Sciences. The award is given to the student who has demonstrated exceptional academic achievement and who has submitted a research paper of exceptional quality. The award is given annually to one student. The award is \$1,000.

Isaac and Mary Williamson Jubilee Fellowship

Open to students in the Humanities and Social Sciences. The award is given to the student who has demonstrated exceptional academic achievement and who has submitted a research paper of exceptional quality. The award is given annually to one student. The award is \$1,000.

Other Student Awards

Beets-Lavigne Award

Open to students in the Humanities and Social Sciences. The award is given to the student who has demonstrated exceptional academic achievement and who has submitted a research paper of exceptional quality. The award is given annually to one student. The award is \$1,000.

Henry Beets Mission Society Scholarship

Open to students in the Humanities and Social Sciences. The award is given to the student who has demonstrated exceptional academic achievement and who has submitted a research paper of exceptional quality. The award is given annually to one student. The award is \$1,000.

Levenszins Awards in Christian Philosophy of Education

Open to students in the Humanities and Social Sciences. The award is given to the student who has demonstrated exceptional academic achievement and who has submitted a research paper of exceptional quality. The award is given annually to one student. The award is \$1,000.







Board of Trustees

Regions 1 and 2

Region 3

Region 4

Region 5

Region 6

Region 7

Region 8

Region 9

Region 10

Region 11

Region 12

Alumni Trustees

At Large Trustees

Administration

Presidents

Office of the President

Academic Affairs

Directors of Programs and Institutes

Administration and Finance

Information Services

Development

Enrollment and External Relations

Student Life

Professor of Physical Education, Emeritus

Professor of Music, Emerita

Professor of History, Emeritus

Controller, Emeritus

Professor of Art, Emeritus

Associate Professor of Music, Emeritus

Professor of Education, Emerita

Professor of Biology, Emerita

Professor of Physics, Emeritus

Professor of Mathematics and Computer
Science, Emeritus

Professor of Germanic Languages,
Emeritus

Librarian, Emeritus

Professor of Germanic Languages,
Emeritus

Professor of Mathematics and Statistics,
Emeritus

Professor of Education, Emeritus

Professor of Geology, Emeritus

Professor of Biology, Emeritus

Professor of English, Emerita

Professor of English, Emeritus

Professor of Physical Education, Emeritus

Professor of English, Emeritus

Professor of Music, Emeritus

Professor of Physical Education, Emeritus

*Professor of Communication Arts and
Sciences, Emeritus*

Professor of Business, Emeritus

*Vice President for Academic Administra-
tion, Emeritus*

Professor of Engineering, Emeritus

Professor of English, Emeritus

Provost, Emeritus

Professor of Biology, Emeritus

Professor of Chemistry, Emeritus

Professor of Chemistry

Professor of Chemistry, Emeritus

Professor of Nursing

Assistant Professor of Sociology

Research Associate, Department of
Germanic Languages

Associate Professor of Business

Assistant Professor of English

Associate Professor of Engineering

Professor of Business

Professor of Communication Arts and
Sciences

Assistant Professor of Religion

Professor of Nursing
Chair of the Department of Nursing

Assistant Professor of Nursing

Professor of English

Professor of Mathematics

Professor of French

Professor of Mathematics and Computer
Science

Associate Professor of Nursing

Assistant Professor of English

Professor of Communication Arts and
Sciences

Professor of Communication Arts and
Sciences

Assistant Professor of Computer Science

Professor of Sociology
Gary & Henrietta Byker Chair

Professor of Music

Professor of Physical Education

Assistant Professor of Communication Arts
and Sciences

Assistant Professor of Communication Arts
and Science

Assistant Professor of Political Science

Assistant Professor of Nursing

Professor of Education

Professor of Art

Professor of Religion

Assistant Professor of Communication Arts
and Sciences

Associate Professor of Philosophy

Associate Professor of Psychology

*Associate Professor of Classical Languages
Chair of the Department of Classical
Languages*

Professor of Physics

*Assistant Professor of Physics and
Astronomy*

Assistant Professor of Physics

Instructor of Philosophy

Adjunct Associate Professor of Psychology

*Professor of Music
College Organist*

Associate Professor of Mathematics

Assistant Professor of Nursing

Professor of Philosophy

Assistant Professor of Religion

Curator of Hekman Library

Associate Professor of Physics

Assistant Professor of Nursing

*Professor of Education
Director of Teacher Education*

Student Academic Services

Adjunct Professor of Education

Dean of Students for Judicial Affairs

Assistant Professor of Spanish

Associate Professor of Chinese and Japanese

Professor of English

Associate Professor of Engineering

Assistant Professor of Art

Professor of Philosophy

Professor of Engineering

*Professor of Education
Chair of the Department of Education*

*Professor of Economics
Chair of the Department of Economics and
Business*

Assistant Professor of English

Associate Professor of Biology

Vice President for Student Life

Assistant Professor of English

Assistant Professor of Religion

Director of Spiritual Leadership Development

Adjunct Instructor in Music

Professor of Biology

Assistant Professor of Computer Science

Professor of Computer Science

Professor of Sociology

Dean of Multicultural Affairs

Associate Professor of Communication Arts and Science

Assistant Professor of Political Science

Assistant Professor of Communication Arts and Sciences

Professor of Political Science

Assistant Professor of Physical Education

Professor of Chemistry

Adjunct Professor of Philosophy

Professor of Communication Arts and Sciences

Professor of Religion

Professor of Computer Science

Assistant Professor of English

Professor of Religion

Chair of the Department of Religion

Professor of Education

Associate Professor of Mathematics

Associate Professor of Spanish

Professor of Philosophy

Director of Hekman Library

Assistant Professor of Philosophy

Associate Professor of Business and Accounting

Professor of Engineering

Associate Professor of English

Assistant Professor of Spanish

Director of the Lilly Vocational Project

Professor of Communication Arts and Sciences

Associate Professor of Education

Assistant Professor of Physical Education

Assistant Professor of Physical Education

Assistant Professor of Business

Associate Professor of Communication Arts
and Sciences

Professor of English

Professor of Music

Professor of Economics

Theological Librarian

Professor of English

Professor of Religion

Professor of Communication Arts and
Sciences

Assistant Professor of Social Work

Associate Professor of Mathematics and
Statistics

Assistant Professor of History

Assistant Professor of History

Professor of French
Chair of the Department of French

Digital Resources Librarian

Professor of Music
Chair of the Department of Music

Professor of Psychology

Professor of Chemistry

Professor of Education

Professor of Business and Accounting

Associate Professor of Spanish

Professor of Political Science
Paul B. Henry Chair in Christianity and
Politics

Instructor in Communication Arts and
Sciences

Assistant Professor of Religion
Interim Dean of the Chapel

Assistant Professor of Germanic Languages

Associate Professor of Philosophy
Dir

Laura A. Smit, M.Div.

Ger

Professor of Education

Professor of Psychology

Professor of Communication Arts and
Sciences

Professor of Political Science
Chair of the Department of Political
Science

Dean for the Contextual Disciplines and for
Natural Sciences and Mathematics
Professor of Mathematics

Professor of Engineering

Professor of Mathematics

Assistant Professor of Sociology

Associate Professor of Psychology

Assistant Professor of Spanish

Professor of Psychology

Professor of Religion

Professor of Economics

Assistant Professor of Spanish

Professor of Biology

Associate Professor of Physical Education

Professor of English

Associate Professor of Nursing

Director of Career Development

Associate Professor of Mathematics and
Statistics

Professor of Biology

Assistant Professor of English

Professor of Recreation
Chair of the Department of Health,
Physical Education, Recreation, Dance,
and Sport

Assistant Professor in Engineering

Assistant Professor in Engineering

Instructor in Art

Professor of Physics

Professor of English

Associate Professor of Sociology

Associate Professor of English

Assistant Professor of Chemistry

Professor of Economics

Assistant Professor of Nursing

Professor of Engineering

Assistant Professor of English

Professor of Economics

*Professor of Computer Science
Chair of the Department of Computer
Science*

Librarian

Counselor, Broene Counseling Center

Professor of Business

*Associate Professor of Communication Arts
and Sciences*

*Associate Professor of Physical Education
Director of Athletics for Men*

Assistant Professor of Geography

*Professor of Biology
Chair of the Department of Biology
Director of Ecosystem Preserve*

Assistant Professor of Philosophy

Professor of Education

Assistant Professor of History

Assistant Professor of History

Assistant Professor of Art

Assistant Professor of Dance

Professor of History

*Professor of Mathematics
Chair of the Department of Mathematics*

Professor of Psychology

*Associate Professor of Communication Arts
and Sciences*

Professor of History

Professor of Engineering

Professor of Religion

Professor of Classical Languages

Assistant Professor of Computer Science

Dean of Residence Life

Associate Professor of Music

*Adjunct Associate Professor of Religion
Director of Calvin Institute for Christian
Worship
Dean of the Chapel*

Assistant Professor of Art

Director, Broome Counseling Center

Assistant Professor of Engineering

Professor of Philosophy

Associate Professor of Engineering

Index

1	2	3	4	5	6	7	8	9	10	11	12	13	14	15	16	17	18	19	20	21	22	23	24	25	26	27	28	29	30	31	32	33	34	35	36	37	38	39	40	41	42	43	44	45	46	47	48	49	50	51	52	53	54	55	56	57	58	59	60	61	62	63	64	65	66	67	68	69	70	71	72	73	74	75	76	77	78	79	80	81	82	83	84	85	86	87	88	89	90	91	92	93	94	95	96	97	98	99	100	101	102	103	104	105	106	107	108	109	110	111	112	113	114	115	116	117	118	119	120	121	122	123	124	125	126	127	128	129	130	131	132	133	134	135	136	137	138	139	140	141	142	143	144	145	146	147	148	149	150	151	152	153	154	155	156	157	158	159	160	161	162	163	164	165	166	167	168	169	170	171	172	173	174	175	176	177	178	179	180	181	182	183	184	185	186	187	188	189	190	191	192	193	194	195	196	197	198	199	200	201	202	203	204	205	206	207	208	209	210	211	212	213	214	215	216	217	218	219	220	221	222	223	224	225	226	227	228	229	230	231	232	233	234	235	236	237	238	239	240	241	242	243	244	245	246	247	248	249	250	251	252	253	254	255	256	257	258	259	260	261	262	263	264	265	266	267	268	269	270	271	272	273	274	275	276	277	278	279	280	281	282	283	284	285	286	287	288	289	290	291	292	293	294	295	296	297	298	299	300	301	302	303	304	305	306	307	308	309	310	311	312	313	314	315	316	317	318	319	320	321	322	323	324	325	326	327	328	329	330	331	332	333	334	335	336	337	338	339	340	341	342	343	344	345	346	347	348	349	350	351	352	353	354	355	356	357	358	359	360	361	362	363	364	365	366	367	368	369	370	371	372	373	374	375	376	377	378	379	380	381	382	383	384	385	386	387	388	389	390	391	392	393	394	395	396	397	398	399	400	401	402	403	404	405	406	407	408	409	410	411	412	413	414	415	416	417	418	419	420	421	422	423	424	425	426	427	428	429	430	431	432	433	434	435	436	437	438	439	440	441	442	443	444	445	446	447	448	449	450	451	452	453	454	455	456	457	458	459	460	461	462	463	464	465	466	467	468	469	470	471	472	473	474	475	476	477	478	479	480	481	482	483	484	485	486	487	488	489	490	491	492	493	494	495	496	497	498	499	500	501	502	503	504	505	506	507	508	509	510	511	512	513	514	515	516	517	518	519	520	521	522	523	524	525	526	527	528	529	530	531	532	533	534	535	536	537	538	539	540	541	542	543	544	545	546	547	548	549	550	551	552	553	554	555	556	557	558	559	560	561	562	563	564	565	566	567	568	569	570	571	572	573	574	575	576	577	578	579	580	581	582	583	584	585	586	587	588	589	590	591	592	593	594	595	596	597	598	599	600	601	602	603	604	605	606	607	608	609	610	611	612	613	614	615	616	617	618	619	620	621	622	623	624	625	626	627	628	629	630	631	632	633	634	635	636	637	638	639	640	641	642	643	644	645	646	647	648	649	650	651	652	653	654	655	656	657	658	659	660	661	662	663	664	665	666	667	668	669	670	671	672	673	674	675	676	677	678	679	680	681	682	683	684	685	686	687	688	689	690	691	692	693	694	695	696	697	698	699	700	701	702	703	704	705	706	707	708	709	710	711	712	713	714	715	716	717	718	719	720	721	722	723	724	725	726	727	728	729	730	731	732	733	734	735	736	737	738	739	740	741	742	743	744	745	746	747	748	749	750	751	752	753	754	755	756	757	758	759	760	761	762	763	764	765	766	767	768	769	770	771	772	773	774	775	776	777	778	779	780	781	782	783	784	785	786	787	788	789	790	791	792	793	794	795	796	797	798	799	800	801	802	803	804	805	806	807	808	809	810	811	812	813	814	815	816	817	818	819	820	821	822	823	824	825	826	827	828	829	830	831	832	833	834	835	836	837	838	839	840	841	842	843	844	845	846	847	848	849	850	851	852	853	854	855	856	857	858	859	860	861	862	863	864	865	866	867	868	869	870	871	872	873	874	875	876	877	878	879	880	881	882	883	884	885	886	887	888	889	890	891	892	893	894	895	896	897	898	899	900	901	902	903	904	905	906	907	908	909	910	911	912	913	914	915	916	917	918	919	920	921	922	923	924	925	926	927	928	929	930	931	932	933	934	935	936	937	938	939	940	941	942	943	944	945	946	947	948	949	950	951	952	953	954	955	956	957	958	959	960	961	962	963	964	965	966	967	968	969	970	971	972	973	974	975	976	977	978	979	980	981	982	983	984	985	986	987	988	989	990	991	992	993	994	995	996	997	998	999	1000
---	---	---	---	---	---	---	---	---	----	----	----	----	----	----	----	----	----	----	----	----	----	----	----	----	----	----	----	----	----	----	----	----	----	----	----	----	----	----	----	----	----	----	----	----	----	----	----	----	----	----	----	----	----	----	----	----	----	----	----	----	----	----	----	----	----	----	----	----	----	----	----	----	----	----	----	----	----	----	----	----	----	----	----	----	----	----	----	----	----	----	----	----	----	----	----	----	----	----	-----	-----	-----	-----	-----	-----	-----	-----	-----	-----	-----	-----	-----	-----	-----	-----	-----	-----	-----	-----	-----	-----	-----	-----	-----	-----	-----	-----	-----	-----	-----	-----	-----	-----	-----	-----	-----	-----	-----	-----	-----	-----	-----	-----	-----	-----	-----	-----	-----	-----	-----	-----	-----	-----	-----	-----	-----	-----	-----	-----	-----	-----	-----	-----	-----	-----	-----	-----	-----	-----	-----	-----	-----	-----	-----	-----	-----	-----	-----	-----	-----	-----	-----	-----	-----	-----	-----	-----	-----	-----	-----	-----	-----	-----	-----	-----	-----	-----	-----	-----	-----	-----	-----	-----	-----	-----	-----	-----	-----	-----	-----	-----	-----	-----	-----	-----	-----	-----	-----	-----	-----	-----	-----	-----	-----	-----	-----	-----	-----	-----	-----	-----	-----	-----	-----	-----	-----	-----	-----	-----	-----	-----	-----	-----	-----	-----	-----	-----	-----	-----	-----	-----	-----	-----	-----	-----	-----	-----	-----	-----	-----	-----	-----	-----	-----	-----	-----	-----	-----	-----	-----	-----	-----	-----	-----	-----	-----	-----	-----	-----	-----	-----	-----	-----	-----	-----	-----	-----	-----	-----	-----	-----	-----	-----	-----	-----	-----	-----	-----	-----	-----	-----	-----	-----	-----	-----	-----	-----	-----	-----	-----	-----	-----	-----	-----	-----	-----	-----	-----	-----	-----	-----	-----	-----	-----	-----	-----	-----	-----	-----	-----	-----	-----	-----	-----	-----	-----	-----	-----	-----	-----	-----	-----	-----	-----	-----	-----	-----	-----	-----	-----	-----	-----	-----	-----	-----	-----	-----	-----	-----	-----	-----	-----	-----	-----	-----	-----	-----	-----	-----	-----	-----	-----	-----	-----	-----	-----	-----	-----	-----	-----	-----	-----	-----	-----	-----	-----	-----	-----	-----	-----	-----	-----	-----	-----	-----	-----	-----	-----	-----	-----	-----	-----	-----	-----	-----	-----	-----	-----	-----	-----	-----	-----	-----	-----	-----	-----	-----	-----	-----	-----	-----	-----	-----	-----	-----	-----	-----	-----	-----	-----	-----	-----	-----	-----	-----	-----	-----	-----	-----	-----	-----	-----	-----	-----	-----	-----	-----	-----	-----	-----	-----	-----	-----	-----	-----	-----	-----	-----	-----	-----	-----	-----	-----	-----	-----	-----	-----	-----	-----	-----	-----	-----	-----	-----	-----	-----	-----	-----	-----	-----	-----	-----	-----	-----	-----	-----	-----	-----	-----	-----	-----	-----	-----	-----	-----	-----	-----	-----	-----	-----	-----	-----	-----	-----	-----	-----	-----	-----	-----	-----	-----	-----	-----	-----	-----	-----	-----	-----	-----	-----	-----	-----	-----	-----	-----	-----	-----	-----	-----	-----	-----	-----	-----	-----	-----	-----	-----	-----	-----	-----	-----	-----	-----	-----	-----	-----	-----	-----	-----	-----	-----	-----	-----	-----	-----	-----	-----	-----	-----	-----	-----	-----	-----	-----	-----	-----	-----	-----	-----	-----	-----	-----	-----	-----	-----	-----	-----	-----	-----	-----	-----	-----	-----	-----	-----	-----	-----	-----	-----	-----	-----	-----	-----	-----	-----	-----	-----	-----	-----	-----	-----	-----	-----	-----	-----	-----	-----	-----	-----	-----	-----	-----	-----	-----	-----	-----	-----	-----	-----	-----	-----	-----	-----	-----	-----	-----	-----	-----	-----	-----	-----	-----	-----	-----	-----	-----	-----	-----	-----	-----	-----	-----	-----	-----	-----	-----	-----	-----	-----	-----	-----	-----	-----	-----	-----	-----	-----	-----	-----	-----	-----	-----	-----	-----	-----	-----	-----	-----	-----	-----	-----	-----	-----	-----	-----	-----	-----	-----	-----	-----	-----	-----	-----	-----	-----	-----	-----	-----	-----	-----	-----	-----	-----	-----	-----	-----	-----	-----	-----	-----	-----	-----	-----	-----	-----	-----	-----	-----	-----	-----	-----	-----	-----	-----	-----	-----	-----	-----	-----	-----	-----	-----	-----	-----	-----	-----	-----	-----	-----	-----	-----	-----	-----	-----	-----	-----	-----	-----	-----	-----	-----	-----	-----	-----	-----	-----	-----	-----	-----	-----	-----	-----	-----	-----	-----	-----	-----	-----	-----	-----	-----	-----	-----	-----	-----	-----	-----	-----	-----	-----	-----	-----	-----	-----	-----	-----	-----	-----	-----	-----	-----	-----	-----	-----	-----	-----	-----	-----	-----	-----	-----	-----	-----	-----	-----	-----	-----	-----	-----	-----	-----	-----	-----	-----	-----	-----	-----	-----	-----	-----	-----	-----	-----	-----	-----	-----	-----	-----	-----	-----	-----	-----	-----	-----	-----	-----	-----	-----	-----	-----	-----	-----	-----	-----	-----	-----	-----	-----	-----	-----	-----	-----	-----	-----	-----	-----	-----	-----	-----	-----	-----	-----	-----	-----	-----	-----	-----	-----	-----	-----	-----	-----	-----	-----	-----	-----	-----	-----	-----	-----	-----	-----	-----	-----	-----	-----	-----	-----	-----	-----	-----	-----	-----	-----	-----	-----	-----	-----	-----	-----	-----	-----	-----	-----	-----	-----	-----	-----	-----	-----	-----	-----	-----	-----	-----	-----	-----	-----	-----	-----	-----	-----	-----	-----	-----	-----	-----	-----	-----	-----	-----	-----	-----	-----	-----	-----	-----	-----	-----	-----	-----	-----	-----	-----	-----	-----	-----	-----	-----	-----	-----	-----	-----	-----	-----	-----	-----	-----	-----	-----	-----	-----	-----	-----	-----	-----	-----	-----	-----	-----	-----	-----	-----	-----	-----	-----	-----	-----	-----	-----	-----	-----	-----	-----	-----	-----	-----	-----	-----	-----	-----	-----	-----	-----	-----	-----	-----	-----	-----	-----	-----	-----	-----	-----	-----	-----	-----	-----	-----	------



Campus Map

Addresses