

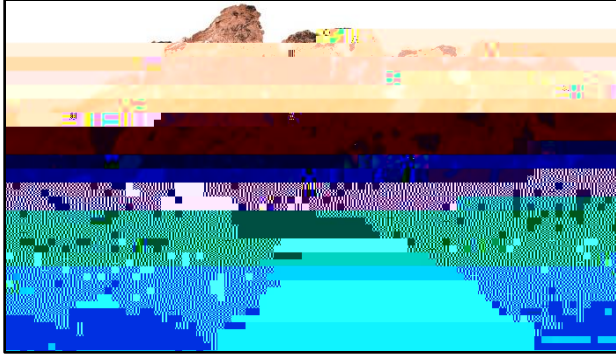
[Cu]

Copper is a very useful and malleable metallic element. A lot of copper is alloyed with other metals, but native copper is not combined with any other element. It occurs in many different forms and often exhibits dendritic characteristics. Mines throughout Michigan's Keweenaw Peninsula still produce native copper, which has wide use in jewelry, currency (pennies before 1982), light fixtures, wiring, and electronics of all kinds. ^{B24}

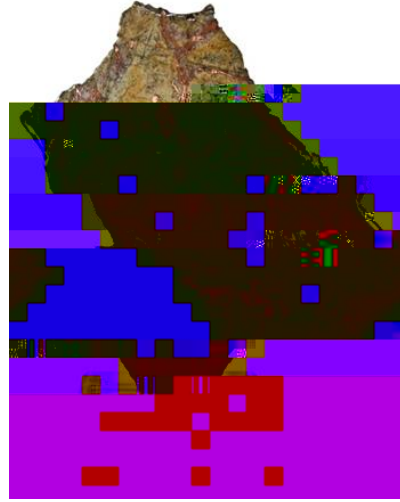
Copper ^{B24}

Copper ^{B2}

Copper is one of the oldest and most useful metals known to mankind. It was first discovered in the Middle East near modern Israel and Egypt. The earliest man-made copper tools and jewelry date back to around 9000 B.C. The Egyptians used copper instruments for medicinal purposes. Copper was later used to make bronze which is an alloy composed of copper and tin. ^{B2}



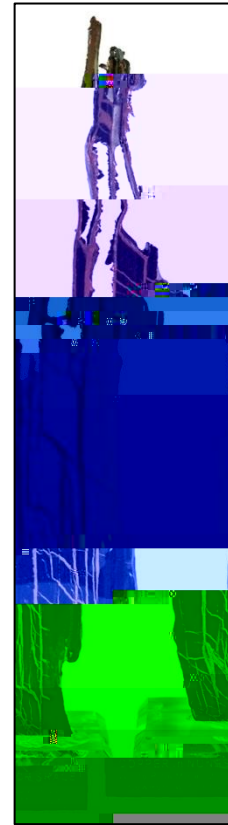
Copper (Leaf) OR34



Native Copper in Matrix P26



Copper after Petrified Wood P20



Copper in Nonesuch Shale OR21

Native copper is known for growing in many different forms. This particular specimen, acquired by Bruce Dice in Michigan, was nicknamed the “copper terrier,” inspired by its close resemblance to the Great Britain dog breed. Natural specimens that resemble other things can be whimsical and interesting in a collection. OR29



Copper OR29.